

AMBRA1 Monoclonal Antibody

Description

Product type	Antibody
Code	BT-MCA2630
Host	Mouse
Isotype	Mouse IgG1
Size	100µL, 50µL
Immunogen	Purified recombinant fragment of human AMBRA1 (AA: 1177-1301) expressed in E. Coli.
Mol wt	142.5kDa
Species reactivity	Others
Clonality	Monoclonal
Recommended application	FCM
Concentration	N/A
Full name	N/A
Synonyms	DCAF3;WDR94

This product is for research use only, not for use in human, therapeutic or diagnostic procedure.

Background

The protein encoded by this gene regulates autophagy and development of the nervous system. Involved in autophagy in controlling protein turnover during neuronal development, and in regulating normal cell survival and proliferation (By similarity).

Recommended Dilution

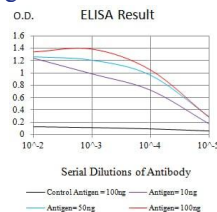
WB: 1:500 - 1:2000

FCM: 1:200 - 1:400

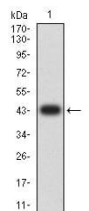
ELISA: 1:10000

Not yet tested in other applications.

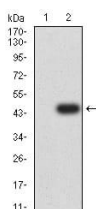
Images



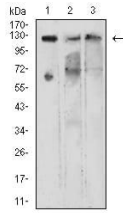
Black line: Control Antigen (100 ng);Purple line: Antigen (10ng); Blue line: Antigen (50 ng); Red line:Antigen (100 ng)



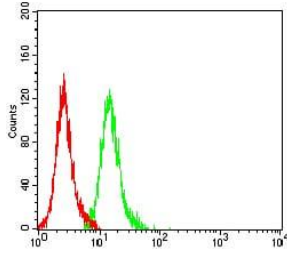
Western blot analysis using KDM1A mAb against human KDM1A (AA: 709-876) recombinant protein. (Expected MW is 43.8 kDa)



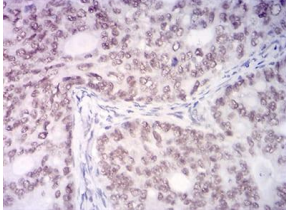
Western blot analysis using KDM1A mAb against HEK293 (1) and KDM1A (AA: 709-876)-hIgGFc transfected HEK293 (2) cell lysate.



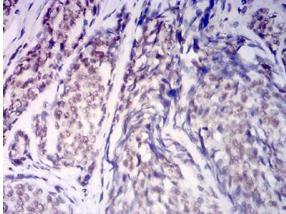
Western blot analysis using KDM1A mouse mAb against COS7 (1), NIH/3T3 (2), and A549 (3) cell lysate.



Flow cytometric analysis of HeLa cells using KDM1A mouse mAb (green) and negative control (red).



Immunohistochemical analysis of paraffin-embedded cervical cancer tissues using KDM1A mouse mAb with DAB staining.



Immunohistochemical analysis of paraffin-embedded esophageal cancer tissues using KDM1A mouse mAb with DAB staining.

Storage

Store at 4°C short term. Aliquot and store at -20°C long term.

501 Changsheng S Rd, Nanhu Dist, Jiaxing, Zhejiang, China

Tel: 86 21 31007137 | E-mail: save@bt-laboratory.com | www.bt-laboratory.com