

## ITGA1 Monoclonal Antibody

### Description

|                                |  |
|--------------------------------|--|
| <b>Product type</b>            | Antibody   |
| <b>Code</b>                    | BT-MCA2639   |
| <b>Host</b>                    | Mouse  |
| <b>Isotype</b>                 | Mouse IgG2a  |
| <b>Size</b>                    | 100µL, 50µL  |
| <b>Immunogen</b>               | Purified recombinant fragment of humanITGA1 (AA: extra(151-364)) expressed in E. Coli. |
| <b>Mol wt</b>                  | 130.8kDa   |
| <b>Species reactivity</b>      | Others   |
| <b>Clonality</b>               | Monoclonal   |
| <b>Recommended application</b> | IHC,ICC,FCM  |
| <b>Concentration</b>           | N/A  |
| <b>Full name</b>               | N/A  |
| <b>Synonyms</b>                | VLA1;CD49a   |

This product is for research use only, not for use in human, therapeutic or diagnostic procedure.

### Background

This gene encodes the alpha 1 subunit of integrin receptors. This protein heterodimerizes with the beta 1 subunit to form a cell-surface receptor for collagen and laminin. The heterodimeric receptor is involved in cell-cell adhesion and may play a role in inflammation and fibrosis. The alpha 1 subunit contains an inserted (I) von Willebrand factor type I domain which is thought to be involved in collagen binding. [provided by RefSeq, Jul 2008]

### Recommended Dilution

WB: 1:500 - 1:2000

IHC-p: 1:200 - 1:1000

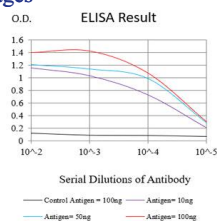
ICC: 1:200 - 1:1000

FCM: 1:200 - 1:400

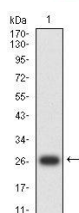
ELISA: 1:10000

Not yet tested in other applications.

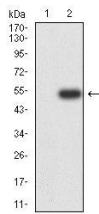
### Images



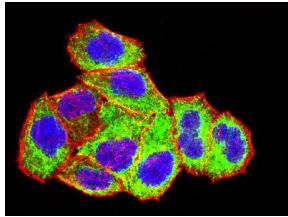
Black line: Control Antigen (100 ng);Purple line: Antigen (10ng); Blue line: Antigen (50 ng); Red line:Antigen (100 ng)



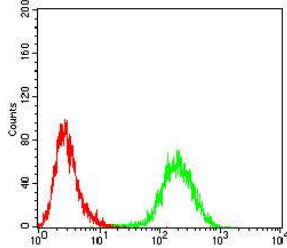
Western blot analysis using ITGA1 mAb against human ITGA1 (AA: extra(151-364)) recombinant protein. (Expected MW is 26.7 kDa)



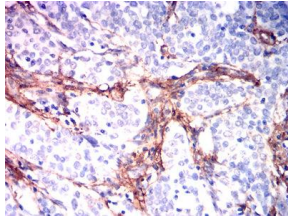
Western blot analysis using ITGA1 mAb against HEK293 (1) and ITGA1 (AA: extra(151-364))-hlgGFc transfected HEK293-6e (2) cell lysate.



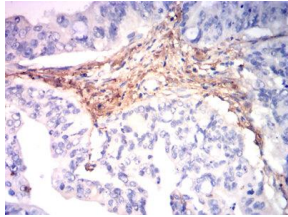
Immunofluorescence analysis of HeLa cells using ITGA1 mouse mAb (green). Blue: DRAQ5 fluorescent DNA dye. Red: Actin filaments have been labeled with Alexa Fluor- 555 phalloidin. Secondary antibody from Fisher (Cat#: 35503)



Flow cytometric analysis of HepG2 cells using ITGA1 mouse mAb (green) and negative control (red).



Immunohistochemical analysis of paraffin-embedded Cervical cancer tissues using ITGA1 mouse mAb with DAB staining.



Immunohistochemical analysis of paraffin-embedded rectal cancer tissues using ITGA1 mouse mAb with DAB staining.

### Storage

Store at 4°C short term. Aliquot and store at -20°C long term.

501 Changsheng S Rd, Nanhu Dist, Jiaxing, Zhejiang, China

Tel: 86 21 31007137 | E-mail: [save@bt-laboratory.com](mailto:save@bt-laboratory.com) | [www.bt-laboratory.com](http://www.bt-laboratory.com)