

GRIN2B Monoclonal Antibody

Description

Product type	Antibody
Code	BT-MCA2642
Host	Mouse
Isotype	Mouse IgG1
Size	100µL, 50µL
Immunogen	Purified recombinant fragment of human GRIN2B (AA: extra 27-163) expressed in E. Coli.
Mol wt	166.4kDa
Species reactivity	Human
Clonality	Monoclonal
Recommended application	ICC,FCM
Concentration	N/A
Full name	N/A
Synonyms	MRD6;NR2B;hNR3;EIEE27;GluN2B;NMDAR2B

This product is for research use only, not for use in human, therapeutic or diagnostic procedure.

Background

N/A

Recommended Dilution

WB: 1:500 - 1:2000

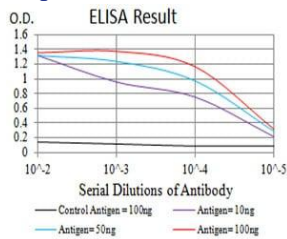
ICC: 1:100 - 1:500

FCM: 1:200 - 1:400

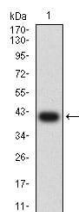
ELISA: 1:10000

Not yet tested in other applications.

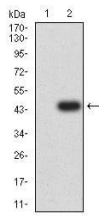
Images



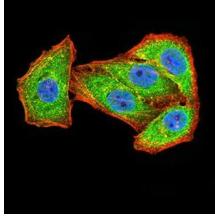
Black line: Control Antigen (100 ng);Purple line: Antigen (10ng); Blue line: Antigen (50 ng); Red line:Antigen (100 ng)



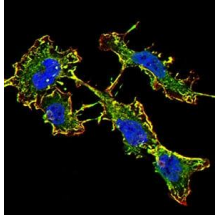
Western blot analysis using GRIN2B mAb against human GRIN2B (AA: extra 27-163) recombinant protein. (Expected MW is 41 kDa)



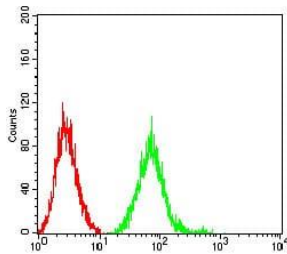
Western blot analysis using GRIN2B mAb against HEK293 (1) and GRIN2B (AA: extra 27-163)-hlgGfC transfected HEK293 (2) cell lysate.



Immunofluorescence analysis of HeLa cells using GRIN2B mouse mAb (green). Blue: DRAQ5 fluorescent DNA dye. Red: Actin filaments have been labeled with Alexa Fluor- 555 phalloidin. Secondary antibody from Fisher (Cat#: 35503)



Immunofluorescence analysis of SK-N-SH cells using GRIN2B mouse mAb (green). Blue: DRAQ5 fluorescent DNA dye. Red: Actin filaments have been labeled with Alexa Fluor- 555 phalloidin. Secondary antibody from Fisher (Cat#: 35503)



Flow cytometric analysis of SK-N-SH cells using GRIN2B mouse mAb (green) and negative control (red).

Storage

Store at 4°C short term. Aliquot and store at -20°C long term.

501 Changsheng S Rd, Nanhu Dist, Jiaxing, Zhejiang, China

Tel: 86 21 31007137 | E-mail: save@bt-laboratory.com | www.bt-laboratory.com