

MAP1LC3B Monoclonal Antibody

Description

Product type	Antibody
Code	BT-MCA2646
Host	Mouse
Isotype	Mouse IgG1
Size	100µL, 50µL
Immunogen	Purified recombinant fragment of human MAP1LC3B expressed in E. Coli.
Mol wt	14.6kDa
Species reactivity	Human
Clonality	Monoclonal
Recommended application	FCM
Concentration	N/A
Full name	N/A
Synonyms	LC3B;ATG8F;MAP1A/1BLC3

This product is for research use only, not for use in human, therapeutic or diagnostic procedure.

Background

The product of this gene is a subunit of neuronal microtubule-associated MAP1A and MAP1B proteins, which are involved in microtubule assembly and important for neurogenesis. Studies on the rat homolog implicate a role for this gene in autophagy, a process that involves the bulk degradation of cytoplasmic component.

Recommended Dilution

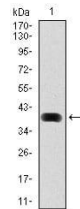
WB: 1:500 - 1:2000

FCM: 1:200 - 1:400

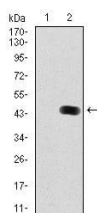
ELISA: 1:10000

Not yet tested in other applications.

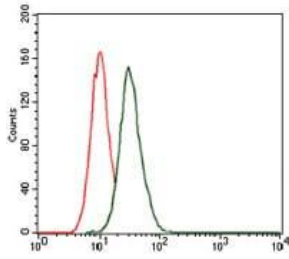
Images



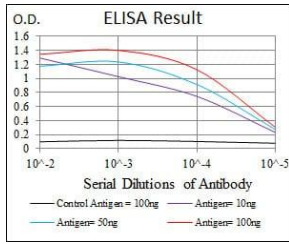
Western blot analysis using MAP1LC3B mAb against human MAP1LC3B (AA: 1-125) recombinant protein. (Expected MW is 40.2 kDa)



Western blot analysis using MAP1LC3B mAb against HEK293 (1) and MAP1LC3B (AA: 1-125)-hIgGfc transfected HEK293 (2) cell lysate.



Flow cytometric analysis of HeLa cells using MAP1LC3B mouse mAb (green) and negative control (red).



Black line: Control Antigen (100 ng); Purple line: Antigen(10ng); Blue line: Antigen (50 ng); Red line: Antigen (100 ng);

Storage

Store at 4°C short term. Aliquot and store at -20°C long term.

501 Changsheng S Rd, Nanhu Dist, Jiaxing, Zhejiang, China

Tel: 86 21 31007137 | E-mail: save@bt-laboratory.com | www.bt-laboratory.com