

## BMP4 Monoclonal Antibody

### Description

<b>Product type</b>	Antibody
<b>Code</b>	BT-MCA2649
<b>Host</b>	Mouse
<b>Isotype</b>	Mouse IgG1
<b>Size</b>	100µL, 50µL
<b>Immunogen</b>	Purified recombinant fragment of human BMP4 (AA: 277-408) expressed in E. Coli.
<b>Mol wt</b>	46.5kDa
<b>Species reactivity</b>	Human,Rat
<b>Clonality</b>	Monoclonal
<b>Recommended application</b>	WB,ICC,FCM
<b>Concentration</b>	N/A
<b>Full name</b>	N/A
<b>Synonyms</b>	ZYME;BMP2B;OFC11;BMP2B1;MCOPS6

This product is for research use only, not for use in human, therapeutic or diagnostic procedure.

### Background

N/A

### Recommended Dilution

WB: 1:500 - 1:2000

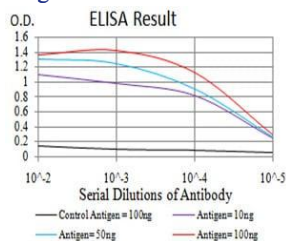
ICC: 1:100 - 1:500

FCM: 1:200 - 1:400

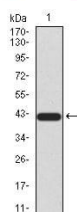
ELISA: 1:10000

Not yet tested in other applications.

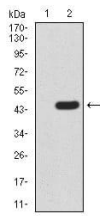
### Images



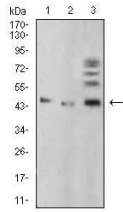
Black line: Control Antigen (100 ng); Purple line: Antigen(10ng); Blue line: Antigen (50 ng); Red line: Antigen (100 ng);



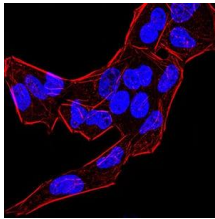
Western blot analysis using BMP4 mAb against human BMP4 (AA: 277-408) recombinant protein. (Expected MW is 41 kDa)



Western blot analysis using BMP4 mAb against HEK293 (1) and BMP4 (AA: 277-408)-hIgGFc transfected HEK293 (2) cell lysate.



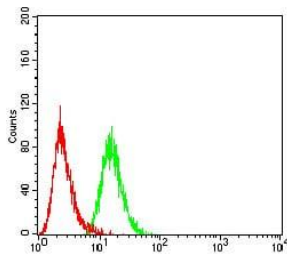
Western blot analysis using BMP4 mouse mAb against A549 (1), HepG2 (2), and C6 (3) cell lysate.



Immunofluorescence analysis of HeLa cells using BMP4 mouse mAb. Blue: DRAQ5 fluorescent DNA dye. Red: Actin filaments have been labeled with Alexa Fluor- 555 phalloidin.



Immunofluorescence analysis of HeLa cells using BMP4 mouse mAb (green). Red: Actin filaments have been labeled with Alexa Fluor- 555 phalloidin. Secondary antibody from Fisher (Cat#: 35503)



Flow cytometric analysis of HeLa cells using BMP4 mouse mAb (green) and negative control (red).

### Storage

Store at 4°C short term. Aliquot and store at -20°C long term.

501 Changsheng S Rd, Nanhu Dist, Jiaxing, Zhejiang, China

Tel: 86 21 31007137 | E-mail: [save@bt-laboratory.com](mailto:save@bt-laboratory.com) | [www.bt-laboratory.com](http://www.bt-laboratory.com)