

## SERPINA3 Monoclonal Antibody

### Description

<b>Product type</b>	Antibody
<b>Code</b>	BT-MCA2665
<b>Host</b>	Mouse
<b>Isotype</b>	Mouse IgG1
<b>Size</b>	100 $\mu$ L, 50 $\mu$ L
<b>Immunogen</b>	Purified recombinant fragment of human SERPINA3 (AA: 279-432) expressed in E. Coli.
<b>Mol wt</b>	47.7kDa
<b>Species reactivity</b>	Human
<b>Clonality</b>	Monoclonal
<b>Recommended application</b>	WB,IHC,FCM
<b>Concentration</b>	N/A
<b>Full name</b>	N/A
<b>Synonyms</b>	ACT;AACT;GIG24;GIG25

This product is for research use only, not for use in human, therapeutic or diagnostic procedure.

### Background

The protein encoded by this gene is a plasma protease inhibitor and member of the serine protease inhibitor class. Polymorphisms in this protein appear to be tissue specific and influence protease targeting. Variations in this protein's sequence have been implicated in Alzheimer's disease, and deficiency of this protein has been associated with liver disease. Mutations have been identified in patients with Parkinson disease and chronic obstructive pulmonary disease.

### Recommended Dilution

WB: 1:500 - 1:2000

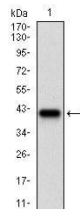
IHC-p: 1:200 - 1:1000

FCM: 1:200 - 1:400

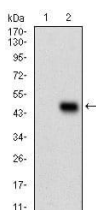
ELISA: 1:10000

Not yet tested in other applications.

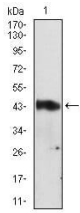
### Images



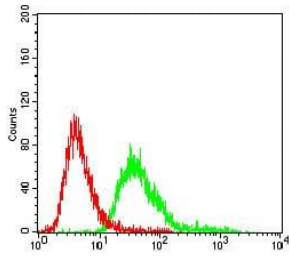
Western blot analysis using SERPINA3 mAb against human SERPINA3 (AA: 279-432) recombinant protein. (Expected MW is 42.3 kDa)



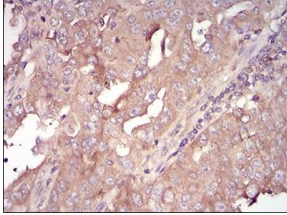
Western blot analysis using SERPINA3 mAb against HEK293 (1) and SERPINA3 (AA: 279-432)-hIgGFc transfected HEK293 (2) cell lysate.



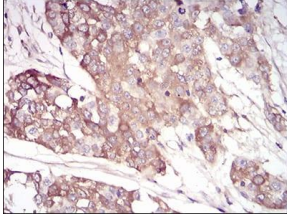
Western blot analysis using SERPINA3 mouse mAb against A549 cell lysate.



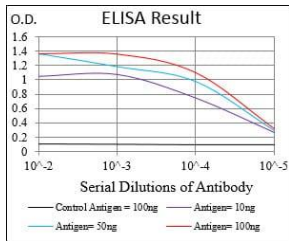
Flow cytometric analysis of A549 cells using SERPINA3 mouse mAb (green) and negative control (red).



Immunohistochemical analysis of paraffin-embedded endometrial cancer tissues using SERPINA3 mouse mAb with DAB staining.



Immunohistochemical analysis of paraffin-embedded bladder cancer tissues using SERPINA3 mouse mAb with DAB staining.



Black line: Control Antigen (100 ng); Purple line: Antigen(10ng); Blue line: Antigen (50 ng); Red line: Antigen (100 ng);

## Storage

Store at 4°C short term. Aliquot and store at -20°C long term.

501 Changsheng S Rd, Nanhu Dist, Jiaxing, Zhejiang, China

Tel: 86 21 31007137 | E-mail: save@bt-laboratory.com | www.bt-laboratory.com