

EPCAM Monoclonal Antibody

Description

Product type	Antibody
Code	BT-MCA2677
Host	Mouse
Isotype	Mouse IgG1
Size	100µL, 50µL
Immunogen	Purified recombinant fragment of human EPCAM (AA: Extra(24-265)) expressed in E. Coli.
Mol wt	35kDa
Species reactivity	Human
Clonality	Monoclonal
Recommended application	WB,FCM
Concentration	N/A
Full name	N/A
Synonyms	HOX2;HOX2F;HOX-2.6

This product is for research use only, not for use in human, therapeutic or diagnostic procedure.

Background

This gene encodes a carcinoma-associated antigen and is a member of a family that includes at least two type I membrane proteins. This antigen is expressed on most normal epithelial cells and gastrointestinal carcinomas and functions as a homotypic calcium-independent cell adhesion molecule. The antigen is being used as a target for immunotherapy treatment of human carcinomas. Mutations in this gene result in congenital tufting enteropathy.

Recommended Dilution

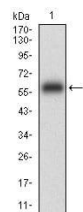
WB: 1:500 - 1:2000

FCM: 1:200 - 1:400

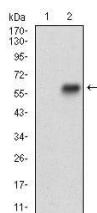
ELISA: 1:10000

Not yet tested in other applications.

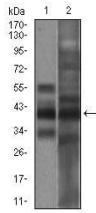
Images



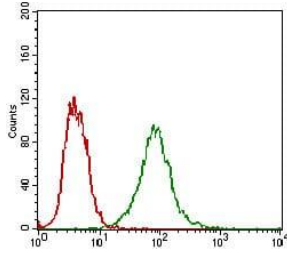
Western blot analysis using EPCAM mAb against human EPCAM (AA: Extra(24-265)) recombinant protein. (Expected MW is 53.4 kDa)



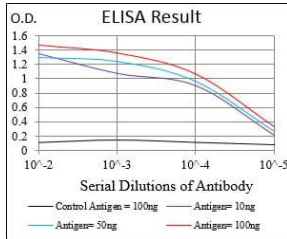
Western blot analysis using EPCAM mAb against HEK293 (1) and EPCAM (AA: Extra(24-265))-hIgGFc transfected HEK293 (2) cell lysate.



Western blot analysis using EPCAM mouse mAb against A431 (1), MCF-7 (2) cell lysate.



Flow cytometric analysis of A431 cells using EPCAM mouse mAb (green) and negative control (red).



Black line: Control Antigen (100 ng); Purple line: Antigen(10ng); Blue line: Antigen (50 ng); Red line: Antigen (100 ng);

Storage

Store at 4°C short term. Aliquot and store at -20°C long term.

501 Changsheng S Rd, Nanhu Dist, Jiaxing, Zhejiang, China

Tel: 86 21 31007137 | E-mail: save@bt-laboratory.com | www.bt-laboratory.com