

CD327 Monoclonal Antibody

Description

Product type	Antibody
Code	BT-MCA2679
Host	Mouse
Isotype	Mouse IgG2b
Size	100µL, 50µL
Immunogen	Purified recombinant fragment of human CD327 (AA: extra 27-347) expressed in E. Coli.
Mol wt	50kDa
Species reactivity	Human
Clonality	Monoclonal
Recommended application	IHC,FCM
Concentration	N/A
Full name	N/A
Synonyms	SIGLEC6;CD33L;OBBP1;CD33L1;CD33L2;CDW327

This product is for research use only, not for use in human, therapeutic or diagnostic procedure.

Background

This gene encodes a member of the SIGLEC (sialic acid binding immunoglobulin-like lectin) family of proteins. The encoded transmembrane receptor binds sialyl-TN glycans and leptin. Placental expression of the encoded protein is upregulated in preeclampsia.

Recommended Dilution

WB: 1:500 - 1:2000

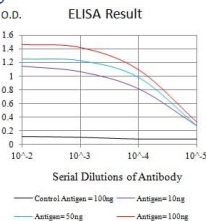
IHC-p: 1:200 - 1:1000

FCM: 1:200 - 1:400

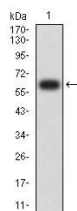
ELISA: 1:10000

Not yet tested in other applications.

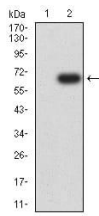
Images



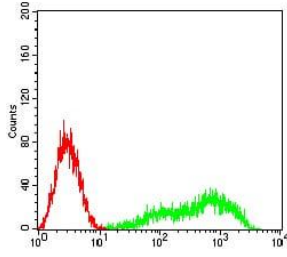
Black line: Control Antigen (100 ng);Purple line: Antigen (10ng); Blue line: Antigen (50 ng); Red line:Antigen (100 ng)



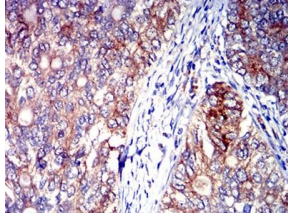
Western blot analysis using CD327 mAb against human CD327 (AA: extra 27-347) recombinant protein. (Expected MW is 61.4 kDa)



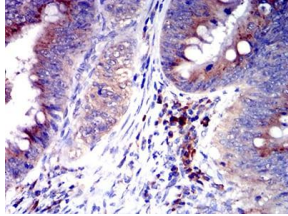
Western blot analysis using CD327 mAb against HEK2993 (1) and CD327 (AA: extra 27-347)-hlgGFc transfected HEK2993 (2) cell lysate.



Flow cytometric analysis of HL-60 cells using CD327 mouse mAb (green) and negative control (red).



Immunohistochemical analysis of paraffin-embedded cervical cancer tissues using CD327 mouse mAb with DAB staining.



Immunohistochemical analysis of paraffin-embedded rectum cancer tissues using CD327 mouse mAb with DAB staining.

Storage

Store at 4°C short term. Aliquot and store at -20°C long term.

501 Changsheng S Rd, Nanhu Dist, Jiaxing, Zhejiang, China

Tel: 86 21 31007137 | E-mail: save@bt-laboratory.com | www.bt-laboratory.com