

RET Monoclonal Antibody

Description

Product type	Antibody
Code	BT-MCA2682
Host	Mouse
Isotype	Mouse IgG1
Size	100μL, 50μL
Immunogen	Purified recombinant fragment of RET (aa896-1063) expressed in E. Coli.
Mol wt	N/A
Species reactivity	Human
Clonality	Monoclonal
Recommended application	Others
Concentration	N/A
Full name	N/A
Synonyms	RET

This product is for research use only, not for use in human, therapeutic or diagnostic procedure.

Background

RET (ret proto-oncogene) is a member of the cadherin superfamily and a receptor tyrosine kinase, which are cell-surface molecules that transduce signals for cell growth and differentiation. It can undergo oncogenic activation *in vivo* and *in vitro* by cytogenetic rearrangement. Ligands that bind the Ret receptor include the glial cell line-derived neurotrophic factor (GDNF) and its congeners neurturin, persephin and artemin. Alterations in the corresponding Ret gene are associated with diseases including papillary thyroid carcinoma, multiple endocrine neoplasia (type 2A and 2B), familial medullary thyroid carcinoma and a congenital developmental disorder known as Hirschsprung disease. The Tyr905 residue located in the Ret kinase domain plays a crucial role in Ret catalytic and biological activity. Substitution of Phe for Tyr905 dramatically inhibits Ret autophosphorylation activity.

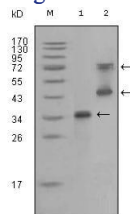
Recommended Dilution

WB: 1:500 - 1:2000

ELISA: 1:10000

Not yet tested in other applications.

Images



Western blot analysis using RET mouse mAb against truncated RET recombinant protein (1) and RET (aa658-1063)-hlgGfC transfected CHO-K1 cell lysate (2).

Storage

Store at 4°C short term. Aliquot and store at -20°C long term.