

EGFR mutant Monoclonal Antibody

Description

Product type	Antibody
Code	BT-MCA2685
Host	Mouse
Isotype	Mouse IgG1
Size	100µL, 50µL
Immunogen	Purified recombinant fragment of human EGFR mutant (AA: 693-893) expressed in E. Coli.
Mol wt	175kDa
Species reactivity	Human
Clonality	Monoclonal
Recommended application	WB,IHC,FCM
Concentration	N/A
Full name	N/A
Synonyms	ERBB;HER1;mENA;ERBB1;PIG61

This product is for research use only, not for use in human, therapeutic or diagnostic procedure.

Background

N/A

Recommended Dilution

WB: 1:500 - 1:2000

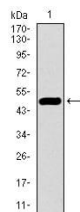
IHC-p: 1:200 - 1:1000

FCM: 1:200 - 1:400

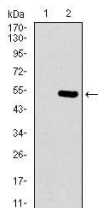
ELISA: 1:10000

Not yet tested in other applications.

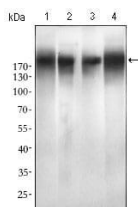
Images



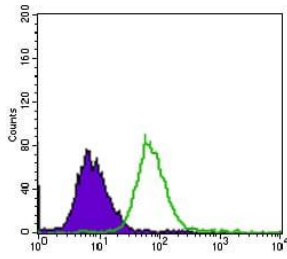
Western blot analysis using EGFR mutant mAb against human EGFR mutant recombinant protein.
(Expected MW is 36.9 kDa)



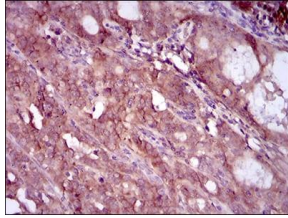
Western blot analysis using EGFR mutant mAb against HEK293 (1) and EGFR mutant (AA: 693-893)-hIgGFc transfected HEK293 (2) cell lysate.



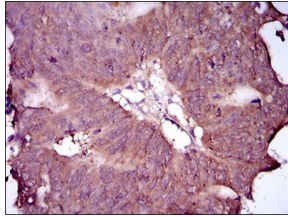
Western blot analysis using EGFR mutant mouse mAb against SPC-A-1 (1), A549 (2), HepG2 (3) and MCF-7 (4) cell lysate.



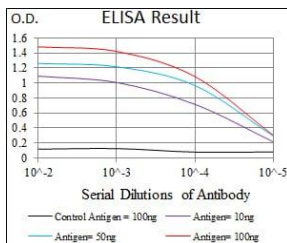
Flow cytometric analysis of HepG2 cells using EGFR mutant mouse mAb (green) and negative control (purple).



Immunohistochemical analysis of paraffin-embedded cervical cancer tissues using EGFR mutant mouse mAb with DAB staining.



Immunohistochemical analysis of paraffin-embedded rectum cancer tissues using EGFR mutant mouse mAb with DAB staining.



Black line: Control Antigen (100 ng); Purple line: Antigen(10ng); Blue line: Antigen (50 ng); Red line: Antigen (100 ng);

Storage

Store at 4°C short term. Aliquot and store at -20°C long term.

501 Changsheng S Rd, Nanhu Dist, Jiaxing, Zhejiang, China

Tel: 86 21 31007137 | E-mail: save@bt-laboratory.com | www.bt-laboratory.com