

## CD169 Monoclonal Antibody

### Description

<b>Product type</b>	Antibody
<b>Code</b>	BT-MCA2689
<b>Host</b>	Mouse
<b>Isotype</b>	Mouse IgG2a
<b>Size</b>	100µL, 50µL
<b>Immunogen</b>	Purified recombinant fragment of human CD169 (AA: extra 20-197) expressed in E. Coli.
<b>Mol wt</b>	182.6kDa
<b>Species reactivity</b>	Human
<b>Clonality</b>	Monoclonal
<b>Recommended application</b>	ICC,FCM
<b>Concentration</b>	N/A
<b>Full name</b>	N/A
<b>Synonyms</b>	SIGLEC1;SN;SIGLEC-1;dJ1009E24.1

This product is for research use only, not for use in human, therapeutic or diagnostic procedure.

### Background

This gene encodes a member of the immunoglobulin superfamily. The encoded protein is a lectin-like adhesion molecule that binds glycoconjugate ligands on cell surfaces in a sialic acid-dependent manner. It is a type I transmembrane protein expressed only by a subpopulation of macrophages and is involved in mediating cell-cell interactions. Alternative splicing produces a transcript variant encoding an isoform that is soluble rather than membrane-bound; however, the full-length nature of this variant has not been determined.

### Recommended Dilution

WB: 1:500 - 1:2000

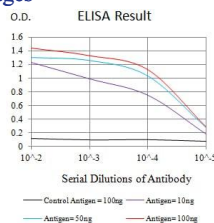
ICC: 1:200 - 1:1000

FCM: 1:200 - 1:400

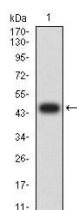
ELISA: 1:10000

Not yet tested in other applications.

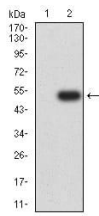
### Images



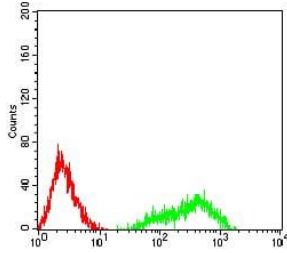
Black line: Control Antigen (100 ng);Purple line: Antigen (10ng); Blue line: Antigen (50 ng); Red line:Antigen (100 ng)



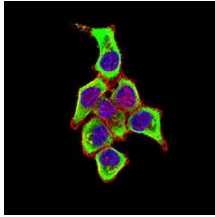
Western blot analysis using CD169 mAb against human CD169 (AA: extra 20-197) recombinant protein. (Expected MW is 45.9 kDa)



Western blot analysis using CD169 mAb against HEK293 (1) and CD169 (AA: extra 20-197)-hlgGFc transfected HEK293 (2) cell lysate.



Flow cytometric analysis of HL-60 cells using CD169 mouse mAb (green) and negative control (red).



Immunofluorescence analysis of HeLa cells using CD169 mouse mAb (green). Blue: DRAQ5 fluorescent DNA dye. Red: Actin filaments have been labeled with Alexa Fluor-555 phalloidin. Secondary antibody from Fisher (Cat#: 35503)

### Storage

Store at 4°C short term. Aliquot and store at -20°C long term.

501 Changsheng S Rd, Nanhu Dist, Jiaxing, Zhejiang, China

Tel: 86 21 31007137 | E-mail: [save@bt-laboratory.com](mailto:save@bt-laboratory.com) | [www.bt-laboratory.com](http://www.bt-laboratory.com)