

CD222 Monoclonal Antibody

Description

| | |
|--------------------------------|--|
| Product type | Antibody |
| Code | BT-MCA2697 |
| Host | Mouse |
| Isotype | Mouse IgG1 |
| Size | 100µL, 50µL |
| Immunogen | Purified recombinant fragment of human CD222 (AA: 160-311) expressed in E. Coli. |
| Mol wt | 274kDa |
| Species reactivity | Human |
| Clonality | Monoclonal |
| Recommended application | Others |
| Concentration | N/A |
| Full name | N/A |
| Synonyms | IGF2R;MPR1;MPRI;CIMPR;M6P-R;MPR300;CI-M6PR;MPR 300;M6P/IGF2R |

This product is for research use only, not for use in human, therapeutic or diagnostic procedure.

Background

This gene encodes a receptor for both insulin-like growth factor 2 and mannose 6-phosphate. The binding sites for each ligand are located on different segments of the protein. This receptor has various functions, including in the intracellular trafficking of lysosomal enzymes, the activation of transforming growth factor beta, and the degradation of insulin-like growth factor 2. Mutation or loss of heterozygosity of this gene has been association with risk of hepatocellular carcinoma. The orthologous mouse gene is imprinted and shows exclusive expression from the maternal allele; however, imprinting of the human gene may be polymorphic, as only a minority of individuals showed biased expression from the maternal allele (PMID:8267611). [provided by RefSeq, Nov 2015]

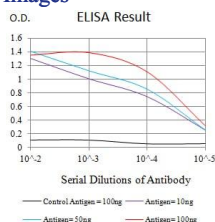
Recommended Dilution

WB: 1:500 - 1:2000

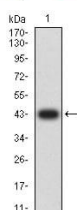
ELISA: 1:10000

Not yet tested in other applications.

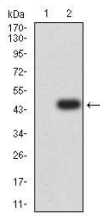
Images



Black line: Control Antigen (100 ng);Purple line: Antigen (10ng); Blue line: Antigen (50 ng); Red line:Antigen (100 ng)



Western blot analysis using CD222 mAb against human CD222 (AA: 160-311) recombinant protein. (Expected MW is 42.9 kDa)



Western blot analysis using CD222 mAb against HEK293 (1) and CD222 (AA: 160-311)-hIgGFc transfected HEK293 (2) cell lysate.

Storage

Store at 4°C short term. Aliquot and store at -20°C long term.

501 Changsheng S Rd, Nanhu Dist, Jiaxing, Zhejiang, China

Tel: 86 21 31007137 | E-mail: save@bt-laboratory.com | www.bt-laboratory.com