

GLRB Monoclonal Antibody

Description

Product type	Antibody
Code	BT-MCA2708
Host	Mouse
Isotype	Mouse IgG2b
Size	100µL, 50µL
Immunogen	Purified recombinant fragment of human GLRB (AA: extra 23-160) expressed in E. Coli.
Mol wt	56.1kDa
Species reactivity	Human
Clonality	Monoclonal
Recommended application	ICC,FCM
Concentration	N/A
Full name	N/A
Synonyms	HKPX2

This product is for research use only, not for use in human, therapeutic or diagnostic procedure.

Background

N/A

Recommended Dilution

WB: 1:500 - 1:2000

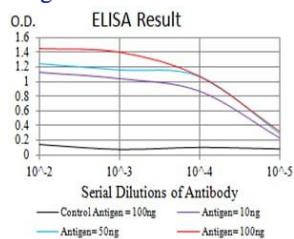
ICC: 1:200 - 1:1000

FCM: 1:200 - 1:400

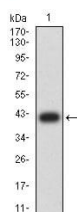
ELISA: 1:10000

Not yet tested in other applications.

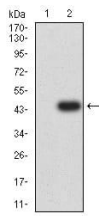
Images



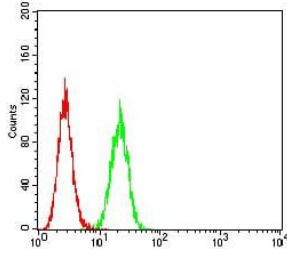
Black line: Control Antigen (100 ng);Purple line: Antigen (10ng); Blue line: Antigen (50 ng); Red line:Antigen (100 ng)



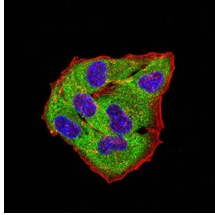
Western blot analysis using GLRB mAb against human GLRB (AA: extra 23-160) recombinant protein. (Expected MW is 41.8 kDa)



Western blot analysis using GLRB mAb against HEK293 (1) and GLRB (AA: extra 23-160)-hIgGFc transfected HEK293 (2) cell lysate.



Flow cytometric analysis of HeLa cells using GLRB mouse mAb (green) and negative control (red).



Immunofluorescence analysis of HeLa cells using GLRB mouse mAb (green). Blue: DRAQ5 fluorescent DNA dye. Red: Actin filaments have been labeled with Alexa Fluor-555 phalloidin. Secondary antibody from Fisher (Cat#: 35503)

Storage

Store at 4°C short term. Aliquot and store at -20°C long term.

501 Changsheng S Rd, Nanhu Dist, Jiaxing, Zhejiang, China

Tel: 86 21 31007137 | E-mail: save@bt-laboratory.com | www.bt-laboratory.com