

FSHB Monoclonal Antibody

Description

Product type	Antibody
Code	BT-MCA2715
Host	Mouse
Isotype	Mouse IgG2a
Size	100µL, 50µL
Immunogen	Purified recombinant fragment of human FSHB (AA: 2x 19-129) expressed in E. Coli.
Mol wt	14.7kDa
Species reactivity	Human
Clonality	Monoclonal
Recommended application	IHC,FCM
Concentration	N/A
Full name	N/A
Synonyms	HH24

This product is for research use only, not for use in human, therapeutic or diagnostic procedure.

Background

The pituitary glycoprotein hormone family includes follicle-stimulating hormone, luteinizing hormone, chorionic gonadotropin, and thyroid-stimulating hormone. All of these glycoproteins consist of an identical alpha subunit and a hormone-specific beta subunit. This gene encodes the beta subunit of follicle-stimulating hormone. In conjunction with luteinizing hormone, follicle-stimulating hormone induces egg and sperm production. Alternative splicing results in two transcript variants encoding the same protein.

Recommended Dilution

WB: 1:500 - 1:2000

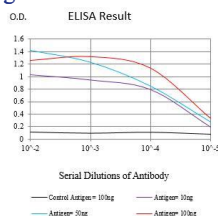
IHC-p: 1:200 - 1:1000

FCM: 1:200 - 1:400

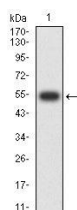
ELISA: 1:10000

Not yet tested in other applications.

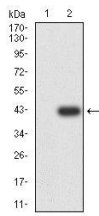
Images



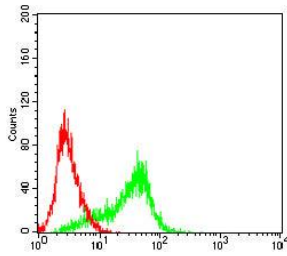
Black line: Control Antigen (100 ng);Purple line: Antigen (10ng); Blue line: Antigen (50 ng); Red line:Antigen (100 ng)



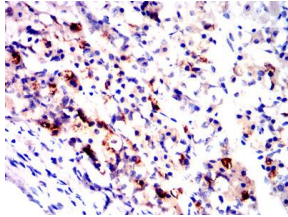
Western blot analysis using FSHB mAb against human FSHB (AA: 2x 19-129) recombinant protein. (Expected MW is 54.1 kDa)



Western blot analysis using FSHB mAb against HEK293-6e (1) and FSHB (AA: 2x 19-129)-hIgGFc transfected HEK293-6e (2) cell lysate.



Flow cytometric analysis of HeLa cells using FSHB mouse mAb (green) and negative control (red).



Immunohistochemical analysis of paraffin-embedded human hypophysis tissues using FSHB mouse mAb with DAB staining.

Storage

Store at 4°C short term. Aliquot and store at -20°C long term.

501 Changsheng S Rd, Nanhu Dist, Jiaxing, Zhejiang, China

Tel: 86 21 31007137 | E-mail: save@bt-laboratory.com | www.bt-laboratory.com