

## SARS-CoV-2 Monoclonal Antibody

### Description

<b>Product type</b>	Antibody
<b>Code</b>	BT-MCA2724
<b>Host</b>	Mouse
<b>Isotype</b>	Human IgG1
<b>Size</b>	100µL, 50µL
<b>Immunogen</b>	Purified recombinant fragment of SARS RBD protein.
<b>Mol wt</b>	23.7kD
<b>Species reactivity</b>	Others
<b>Clonality</b>	Monoclonal
<b>Recommended application</b>	Others
<b>Concentration</b>	N/A
<b>Full name</b>	N/A
<b>Synonyms</b>	S1

This product is for research use only, not for use in human, therapeutic or diagnostic procedure.

### Background

The RBD protein encoded by S gene (part of MN908947.2) is a receptor-binding protein of coronavirus that was shown to bind ACE-2 protein. RBD protein is highly homologous to SARS RBD protein.

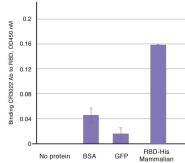
### Recommended Dilution

WB: 1:1000

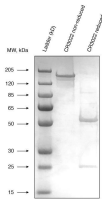
ELISA: 1:200

Not yet tested in other applications.

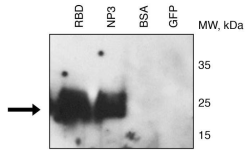
### Images



Binding of CR3022 to RBD by ELISA. For ELISA with BSA, GFP or RBD-His mammalian proteins CR3022 Ab was 1:200 dilution; secondary anti-human Fc-HRP 1:5000 dilution was used.



Expression of recombinant CR3022 antibody



Binding of CR3022 to RBD and NP3 (fragment 3) of 2019nCoV proteins by Western blotting . RBD- and terminal fragment of Nucleocapsid protein (NP3) were loaded on SDS gel and BSA and GFP proteins as negative controls. Western blotting was done with CR3022 antibody 1: 1000 dilution as primary antibody, and with anti-human Fc secondary antibody 1: 10,000 dilution

### Storage

Store at 4°C short term. Aliquot and store at -20°C long term.

501 Changsheng S Rd, Nanhu Dist, Jiaxing, Zhejiang, China

Tel: 86 21 31007137 | E-mail: [save@bt-laboratory.com](mailto:save@bt-laboratory.com) | [www.bt-laboratory.com](http://www.bt-laboratory.com)