

ID2 Monoclonal Antibody

Description

Product type	Antibody
Code	BT-MCA2726
Host	Mouse
Isotype	Mouse IgG1
Size	100µL, 50µL
Immunogen	Purified recombinant fragment of human ID2 (AA: 1-134) expressed in E. Coli.
Mol wt	15kDa
Species reactivity	Human
Clonality	Monoclonal
Recommended application	WB,IHC,FCM
Concentration	N/A
Full name	N/A
Synonyms	GIG8;ID2A;ID2H;bHLHb26

This product is for research use only, not for use in human, therapeutic or diagnostic procedure.

Background

N/A

Recommended Dilution

WB: 1:500 - 1:2000

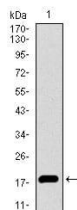
IHC-p: 1:200 - 1:1000

FCM: 1:200 - 1:400

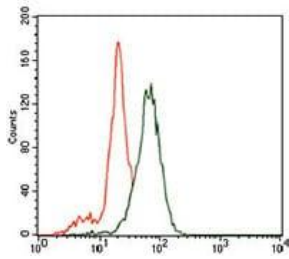
ELISA: 1:10000

Not yet tested in other applications.

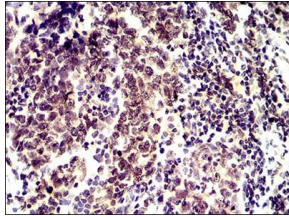
Images



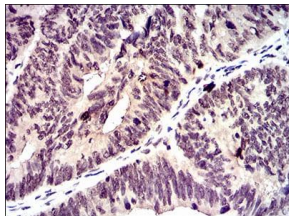
Western blot analysis using ID2 mAb against human ID2 recombinant protein. (Expected MW is 17.3 kDa)



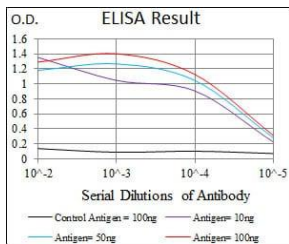
Flow cytometric analysis of SK-N-SH cells using ID2 mouse mAb (green) and negative control (purple).



Immunohistochemical analysis of paraffin-embedded breast cancer tissues using ID2 mouse mAb with DAB staining.



Immunohistochemical analysis of paraffin-embedded rectum cancer tissues using ID2 mouse mAb with DAB staining.



Black line: Control Antigen (100 ng); Purple line: Antigen(10ng); Blue line: Antigen (50 ng); Red line: Antigen (100 ng);

Storage

Store at 4°C short term. Aliquot and store at -20°C long term.

501 Changsheng S Rd, Nanhu Dist, Jiaxing, Zhejiang, China

Tel: 86 21 31007137 | E-mail: save@bt-laboratory.com | www.bt-laboratory.com