

## ASH2L Monoclonal Antibody

### Description

|                                |  |
|--------------------------------|--|
| <b>Product type</b>            | Antibody   |
| <b>Code</b>                    | BT-MCA2764   |
| <b>Host</b>                    | Mouse  |
| <b>Isotype</b>                 | Mouse IgG1   |
| <b>Size</b>                    | 100µL, 50µL  |
| <b>Immunogen</b>               | Purified recombinant fragment of human ASH2L (AA: 493-628) expressed in E. Coli. |
| <b>Mol wt</b>                  | 68.7kDa  |
| <b>Species reactivity</b>      | Human,Mouse  |
| <b>Clonality</b>               | Monoclonal   |
| <b>Recommended application</b> | WB,IHC,FCM   |
| <b>Concentration</b>           | N/A  |
| <b>Full name</b>               | N/A  |
| <b>Synonyms</b>                | ASH2;Bre2;ASH2L1;ASH2L2  |

This product is for research use only, not for use in human, therapeutic or diagnostic procedure.

### Background

N/A

### Recommended Dilution

WB: 1:500 - 1:2000

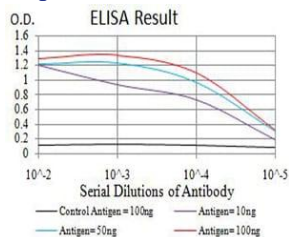
IHC-p: 1:200 - 1:1000

FCM: 1:200 - 1:400

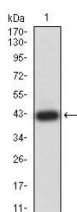
ELISA: 1:10000

Not yet tested in other applications.

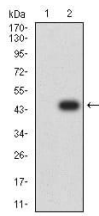
### Images



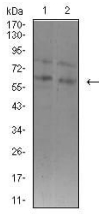
Black line: Control Antigen (100 ng);Purple line: Antigen (10ng); Blue line: Antigen (50 ng); Red line:Antigen (100 ng)



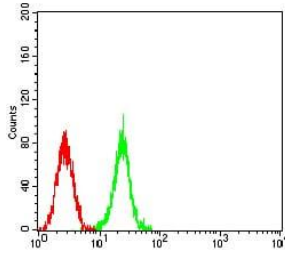
Western blot analysis using ASH2L mAb against human ASH2L (AA: 493-628) recombinant protein. (Expected MW is 41.6 kDa)



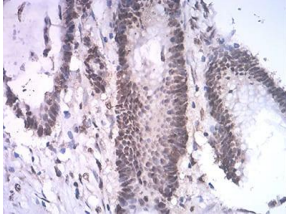
Western blot analysis using ASH2L mAb against HEK293 (1) and ASH2L (AA: 493-628)-hIgGFc transfected HEK293 (2) cell lysate.



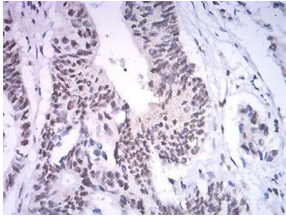
Western blot analysis using ASH2L mouse mAb against K562 (1) and F9 (2) cell lysate.



Flow cytometric analysis of K562 cells using ASH2L mouse mAb (green) and negative control (red).



Immunohistochemical analysis of paraffin-embedded colon cancer tissues using ASH2L mouse mAb with DAB staining.



Immunohistochemical analysis of paraffin-embedded rectum cancer tissues using ASH2L mouse mAb with DAB staining.

### Storage

Store at 4°C short term. Aliquot and store at -20°C long term.

501 Changsheng S Rd, Nanhu Dist, Jiaxing, Zhejiang, China

Tel: 86 21 31007137 | E-mail: [save@bt-laboratory.com](mailto:save@bt-laboratory.com) | [www.bt-laboratory.com](http://www.bt-laboratory.com)