

IL1B Monoclonal Antibody

Description

Product type	Antibody
Code	BT-MCA2770
Host	Mouse
Isotype	Mouse IgG1
Size	100µL, 50µL
Immunogen	Purified recombinant fragment of human IL1B (AA: 117-269) expressed in E. Coli.
Mol wt	30.7kDa
Species reactivity	N/A
Clonality	Monoclonal
Recommended application	IHC,ICC,FCM
Concentration	N/A
Full name	N/A
Synonyms	IL-1;IL1F2;IL1beta;IL1-BETA

This product is for research use only, not for use in human, therapeutic or diagnostic procedure.

Background

The protein encoded by this gene is a member of the interleukin 1 cytokine family. This cytokine is produced by activated macrophages as a proprotein, which is proteolytically processed to its active form by caspase 1. This cytokine is an important mediator of the inflammatory response, and is involved in a variety of cellular activities, including cell proliferation, differentiation, and apoptosis. The induction of cyclooxygenase2 by this cytokine in the central nervous system is found to contribute to inflammatory pain hypersensitivity. This gene and eight other interleukin 1 family genes form a cytokine gene cluster on chromosome 2.

Recommended Dilution

WB: 1:500 - 1:2000

IHC-p: 1:200 - 1:1000

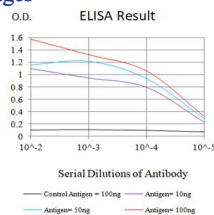
ICC: 1:200 - 1:1000

FCM: 1:200 - 1:400

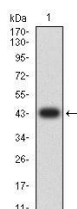
ELISA: 1:10000

Not yet tested in other applications.

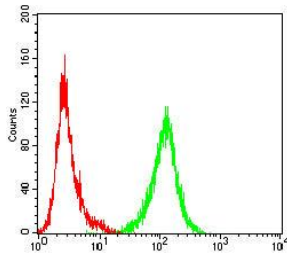
Images



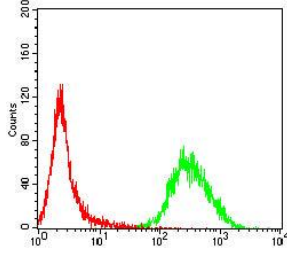
Black line: Control Antigen (100 ng);Purple line: Antigen (10ng); Blue line: Antigen (50 ng); Red line:Antigen (100 ng)



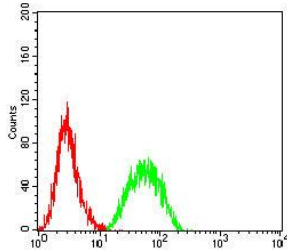
Western blot analysis using IL1B mAb against human IL1B (AA: 117-269) recombinant protein. (Expected MW is 43.4 kDa)



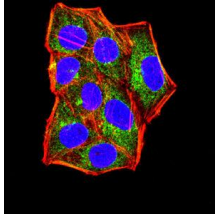
Flow cytometric analysis of Jurkat cells using IL1B mouse mAb (green) and negative control (red).



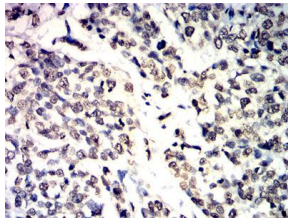
Flow cytometric analysis of MOLT4 cells using IL1B mouse mAb (green) and negative control (red).



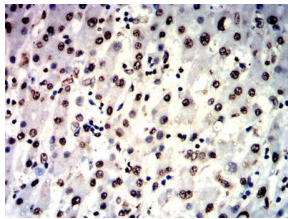
Flow cytometric analysis of THP-1 cells using IL1B mouse mAb (green) and negative control (red).



Immunofluorescence analysis of HeLa cells using IL1B mouse mAb (green). Blue: DRAQ5 fluorescent DNA dye. Red: Actin filaments have been labeled with Alexa Fluor- 555 phalloidin. Secondary antibody from Fisher (Cat#: 35503)



Immunohistochemical analysis of paraffin-embedded bladder cancer tissues using IL1B mouse mAb with DAB staining.



Immunohistochemical analysis of paraffin-embedded liver cancer tissues using IL1B mouse mAb with DAB staining.

Storage

Store at 4°C short term. Aliquot and store at -20°C long term.

501 Changsheng S Rd, Nanhu Dist, Jiaxing, Zhejiang, China

Tel: 86 21 31007137 | E-mail: save@bt-laboratory.com | www.bt-laboratory.com