

RAB27A Monoclonal Antibody

Description

Product type	Antibody
Code	BT-MCA2773
Host	Mouse
Isotype	Mouse IgG2b
Size	100µL, 50µL
Immunogen	Purified recombinant fragment of human RAB27A (AA: FULL(1-221)) expressed in E. Coli.
Mol wt	24.9kDa
Species reactivity	Human
Clonality	Monoclonal
Recommended application	IHC
Concentration	N/A
Full name	N/A
Synonyms	GS2;RAM;RAB27;HsT18676

This product is for research use only, not for use in human, therapeutic or diagnostic procedure.

Background

The protein encoded by this gene belongs to the small GTPase superfamily, Rab family. The protein is membrane-bound and may be involved in protein transport and small GTPase mediated signal transduction. Mutations in this gene are associated with Griscelli syndrome type 2. Alternative splicing occurs at this locus and four transcript variants encoding the same protein have been identified.

Recommended Dilution

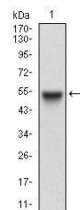
WB: 1:500 - 1:2000

IHC-p: 1:200 - 1:1000

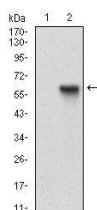
ELISA: 1:10000

Not yet tested in other applications.

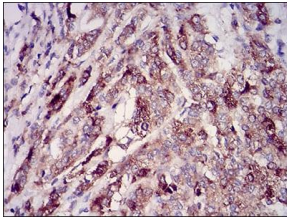
Images



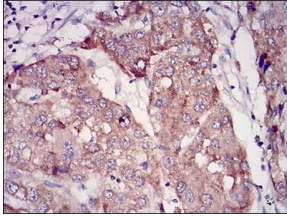
Western blot analysis using RAB27A mAb against human RAB27A (AA: FULL(1-221)) recombinant protein. (Expected MW is 50.8 kDa)



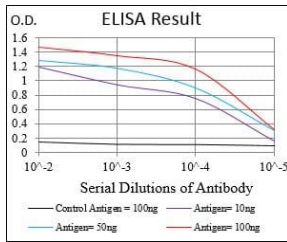
Western blot analysis using RAB27A mAb against HEK293 (1) and RAB27A (AA: FULL(1-221))-hIgGFc transfected HEK293 (2) cell lysate.



Immunohistochemical analysis of paraffin-embedded prostate cancer tissues using RAB27A mouse mAb with DAB staining.



Immunohistochemical analysis of paraffin-embedded liver cancer tissues using RAB27A mouse mAb with DAB staining.



Black line: Control Antigen (100 ng); Purple line: Antigen(10ng); Blue line: Antigen (50 ng); Red line: Antigen (100 ng);

Storage

Store at 4°C short term. Aliquot and store at -20°C long term.

501 Changsheng S Rd, Nanhu Dist, Jiaxing, Zhejiang, China

Tel: 86 21 31007137 | E-mail: save@bt-laboratory.com | www.bt-laboratory.com