

4E-BP1 Monoclonal Antibody

Description

Product type	Antibody
Code	BT-MCA2781
Host	Mouse
Isotype	Mouse IgG1
Size	100μL, 50μL
Immunogen	Purified recombinant fragment of 4E-BP1 expressed in E. Coli.
Mol wt	N/A
Species reactivity	Human
Clonality	Monoclonal
Recommended application	IHC
Concentration	N/A
Full name	N/A
Synonyms	BP-1;4EBP1;4E-BP1;PHAS-I;MGC4316;EIF4EBP1

This product is for research use only, not for use in human, therapeutic or diagnostic procedure.

Background

4E-BP1 (eukaryotic translation Initiation Factor 4E Binding Protein 1), also called ELF4EBP1/BP-1/PHAS-I, which is located on chromosome 8p12, with 118-amino acid protein (about 13kDa). Binding of eIF4EBP1 to eIF4E is reversible and is dependent on the phosphorylation status of eIF4EBP1. Non phosphorylated eIF4EBP1 will bind strongly to eIF4E while (24kDa), the phosphorylated form will not. Akt, TOR, MAP kinase, S6 kinase, and Cdc2 are known kinases capable of inactivating eIF4EBP1 binding to eIF4E by phosphorylating either threonines 35, 45, 69 or serine 64. Although, not all phosphorylation events equally block the eIF4EBP1-eIF4E interaction.

Recommended Dilution

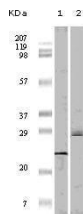
WB: 1:500 - 1:2000

IHC-p: 1:200 - 1:1000

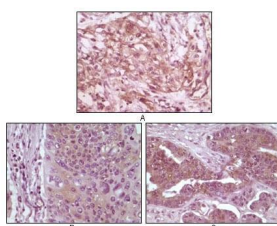
ELISA: 1:10000

Not yet tested in other applications.

Images



Western blot analysis using 4E-BP1 mouse mAb against truncated 4E-BP1 recombinant protein (1) and A431 cell lysate (2).



Immunohistochemical analysis of paraffin-embedded human pancreas carcinoma (A), esophagus carcinoma tissue (B) and ovary tumor tissue (C), showing cytoplasmic and membrane localization using 4E-BP1 mouse mAb with DAB staining.

Storage

Store at 4°C short term. Aliquot and store at -20°C long term.

501 Changsheng S Rd, Nanhu Dist, Jiaxing, Zhejiang, China

Tel: 86 21 31007137 | E-mail: save@bt-laboratory.com | www.bt-laboratory.com