

LILRB2 Monoclonal Antibody

Description

Product type	Antibody
Code	BT-MCA2784
Host	Mouse
Isotype	Mouse IgG2a
Size	100µL, 50µL
Immunogen	Purified recombinant fragment of human LILRB2 (AA: 51-184) expressed in E. Coli.
Mol wt	65kDa
Species reactivity	Human
Clonality	Monoclonal
Recommended application	WB,FCM
Concentration	N/A
Full name	N/A
Synonyms	ILT4;LIR2;CD85D;ILT-4;LIR-2;MIR10;MIR-10

This product is for research use only, not for use in human, therapeutic or diagnostic procedure.

Background

This gene is a member of the leukocyte immunoglobulin-like receptor (LIR) family, which is found in a gene cluster at chromosomal region 19q13.4. The encoded protein belongs to the subfamily B class of LIR receptors which contain two or four extracellular immunoglobulin domains, a transmembrane domain, and two to four cytoplasmic immunoreceptor tyrosine-based inhibitory motifs (ITIMs). The receptor is expressed on immune cells where it binds to MHC class I molecules on antigen-presenting cells and transduces a negative signal that inhibits stimulation of an immune response. It is thought to control inflammatory responses and cytotoxicity to help focus the immune response and limit autoreactivity. Multiple transcript variants encoding different isoforms have been found for this gene.

Recommended Dilution

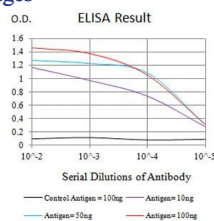
WB: 1:500 - 1:2000

FCM: 1:200 - 1:400

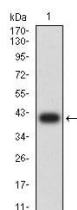
ELISA: 1:10000

Not yet tested in other applications.

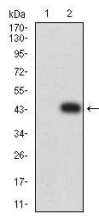
Images



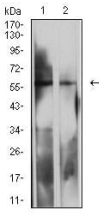
Black line: Control Antigen (100 ng);Purple line: Antigen (10ng); Blue line: Antigen (50 ng); Red line:Antigen (100 ng)



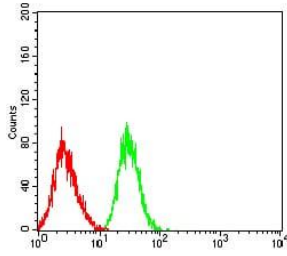
Western blot analysis using LILRB2 mAb against human LILRB2 (AA: 51-184) recombinant protein. (Expected MW is 41 kDa)



Western blot analysis using LILRB2 mAb against HEK293 (1) and LILRB2 (AA: 51-184)-hIgGFc transfected HEK293 (2) cell lysate.



Western blot analysis using LILRB2 mouse mAb against MOLT4 (1) and K562 (2) cell lysate.



Flow cytometric analysis of HL-60 cells using LILRB2 mouse mAb (green) and negative control (red).

Storage

Store at 4°C short term. Aliquot and store at -20°C long term.

501 Changsheng S Rd, Nanhu Dist, Jiaxing, Zhejiang, China

Tel: 86 21 31007137 | E-mail: save@bt-laboratory.com | www.bt-laboratory.com