

LHCGR Monoclonal Antibody

Description

Product type	Antibody
Code	BT-MCA2800
Host	Mouse
Isotype	Mouse IgG1
Size	100μL, 50μL
Immunogen	LHR-29 from ATCC
Mol wt	78.6kDa
Species reactivity	Human
Clonality	Monoclonal
Recommended application	WB,ICC,FCM
Concentration	N/A
Full name	N/A
Synonyms	HHG;LHR;LCGR;LGR2;ULG5;LHRHR;LSH-R;LH/CGR;LH/CG-R

This product is for research use only, not for use in human, therapeutic or diagnostic procedure.

Background

This gene encodes the receptor for both luteinizing hormone and choriogonadotropin. This receptor belongs to the G-protein coupled receptor 1 family, and its activity is mediated by G proteins which activate adenylate cyclase. Mutations in this gene result in disorders of male secondary sexual character development, including familial male precocious puberty, also known as testotoxicosis, hypogonadotropic hypogonadism, Leydig cell adenoma with precocious puberty, and male pseudohermaphroditism with Leydig cell hypoplasia.

Recommended Dilution

WB: 1:500 - 1:2000

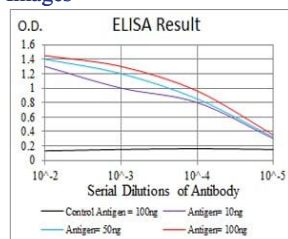
ICC: 1:200 - 1:1000

FCM: 1:200 - 1:400

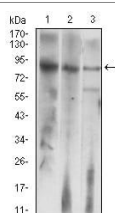
ELISA: 1:10000

Not yet tested in other applications.

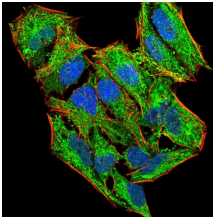
Images



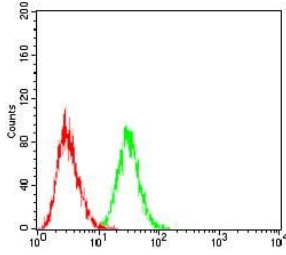
Black line: Control Antigen (100 ng); Purple line: Antigen(10ng); Blue line: Antigen (50 ng); Red line: Antigen (100 ng);



Western blot analysis using LHCGR mouse mAb against HepG2 (1), Jurkat (2), and SMMC-7721 (3) cell lysate.



Immunofluorescence analysis of HeLa cells using LHR-29 mouse mAb (green). Blue: DRAQ5 fluorescent DNA dye. Red: Actin filaments have been labeled with Alexa Fluor- 555 phalloidin. Secondary antibody from Fisher (Cat#: 35503)



Flow cytometric analysis of Jurkat cells using LHCGR mouse mAb (green) and negative control (red).

Storage

Store at 4°C short term. Aliquot and store at -20°C long term.

501 Changsheng S Rd, Nanhu Dist, Jiaxing, Zhejiang, China

Tel: 86 21 31007137 | E-mail: save@bt-laboratory.com | www.bt-laboratory.com