

## SMARCA1 Monoclonal Antibody

### Description

<b>Product type</b>	Antibody
<b>Code</b>	BT-MCA2813
<b>Host</b>	Mouse
<b>Isotype</b>	Mouse IgG1
<b>Size</b>	100µL, 50µL
<b>Immunogen</b>	Purified recombinant fragment of human SMARCA1 (AA: 933-1070) expressed in E. Coli.
<b>Mol wt</b>	122.6kDa
<b>Species reactivity</b>	Human,Mouse
<b>Clonality</b>	Monoclonal
<b>Recommended application</b>	WB,IHC,FCM
<b>Concentration</b>	N/A
<b>Full name</b>	N/A
<b>Synonyms</b>	SWI1;ISWI;SWI2;SNF2L;SNF2L1;SNF2LB;SNF2LT;hSNF2L;NURF140

This product is for research use only, not for use in human, therapeutic or diagnostic procedure.

### Background

N/A

### Recommended Dilution

WB: 1:500 - 1:2000

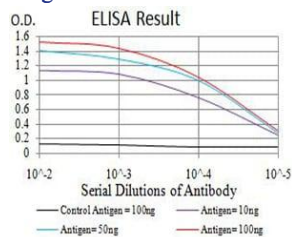
IHC-p: 1:200 - 1:1000

FCM: 1:200 - 1:400

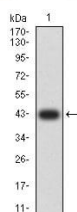
ELISA: 1:10000

Not yet tested in other applications.

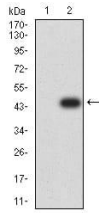
### Images



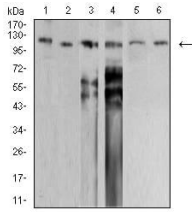
Black line: Control Antigen (100 ng);Purple line: Antigen (10ng); Blue line: Antigen (50 ng); Red line:Antigen (100 ng)



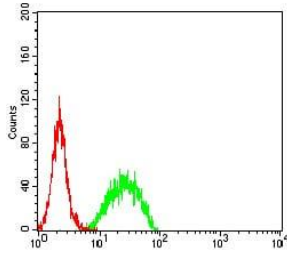
Western blot analysis using SMARCA1 mAb against human SMARCA1 (AA: 933-1070) recombinant protein. (Expected MW is 42.4 kDa)



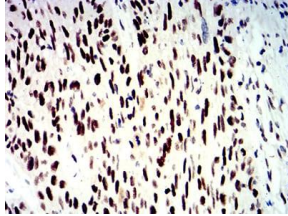
Western blot analysis using SMARCA1 mAb against HEK293 (1) and SMARCA1 (AA: 933-1070)-hlgGFc transfected HEK293 (2) cell lysate.



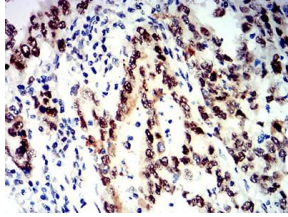
Western blot analysis using SMARCA1 mouse mAb against PANC-1 (1), HEK293 (2), SW620 (3), HT-29 (4), SH-SY5Y (5), and SK-OV-3 (6) cell lysate.



Flow cytometric analysis of NIH/3T3 cells using SMARCA1 mouse mAb (green) and negative control (red).



Immunohistochemical analysis of paraffin-embedded esophageal cancer tissues using SMARCA1 mouse mAb with DAB staining.



Immunohistochemical analysis of paraffin-embedded stomach cancer tissues using SMARCA1 mouse mAb with DAB staining.

### Storage

Store at 4°C short term. Aliquot and store at -20°C long term.

501 Changsheng S Rd, Nanhu Dist, Jiaxing, Zhejiang, China

Tel: 86 21 31007137 | E-mail: [save@bt-laboratory.com](mailto:save@bt-laboratory.com) | [www.bt-laboratory.com](http://www.bt-laboratory.com)