

RABEP2 Monoclonal Antibody

Description

Product type	Antibody
Code	BT-MCA2814
Host	Mouse
Isotype	Mouse IgG1
Size	100µL, 50µL
Immunogen	Purified recombinant fragment of human RABEP2 (AA: 10-200) expressed in HEK293-6e cells supernatant.
Mol wt	63.5kDa
Species reactivity	Others
Clonality	Monoclonal
Recommended application	IHC,FCM
Concentration	N/A
Full name	N/A
Synonyms	FRA

This product is for research use only, not for use in human, therapeutic or diagnostic procedure.

Background

This gene encodes a Rabaptin, RAB GTPase Binding Effector Protein 2. The encoded protein Plays a role in membrane trafficking and in homotypic early endosome fusion. Participates in arteriogenesis by regulating vascular endothelial growth factor receptor 2/VEGFR2 cell surface expression and endosomal trafficking . By interacting with SDCCAG8, localizes to centrosomes and plays a critical role in ciliogenesis

Recommended Dilution

WB: 1:500 - 1:2000

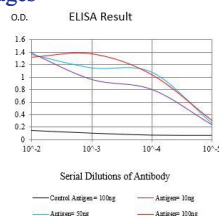
IHC-p: 1:200 - 1:1000

FCM: 1:200 - 1:400

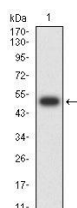
ELISA: 1:10000

Not yet tested in other applications.

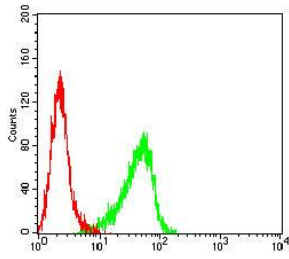
Images



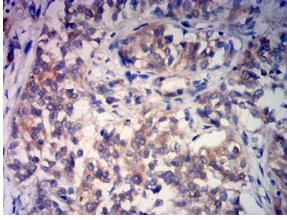
Black line: Control Antigen (100 ng);Purple line: Antigen (10ng); Blue line: Antigen (50 ng); Red line:Antigen (100 ng)



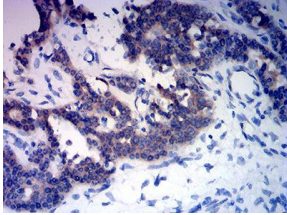
Western blot analysis using RABEP2 mAb against human RABEP2 (AA: 10-200) recombinant protein. (Expected MW is 50 kDa)



Flow cytometric analysis of HeLa cells using RABEP2 mouse mAb (green) and negative control (red).



Immunohistochemical analysis of paraffin-embedded bladder cancer tissues using RABEP2 mouse mAb with DAB staining.



Immunohistochemical analysis of paraffin-embedded ovarian cancer tissues using RABEP2 mouse mAb with DAB staining.

Storage

Store at 4°C short term. Aliquot and store at -20°C long term.

501 Changsheng S Rd, Nanhu Dist, Jiaxing, Zhejiang, China

Tel: 86 21 31007137 | E-mail: save@bt-laboratory.com | www.bt-laboratory.com