

## GRIN3B Monoclonal Antibody

### Description

|                                |   |
|--------------------------------|---|
| <b>Product type</b>            | Antibody  |
| <b>Code</b>                    | BT-MCA2821  |
| <b>Host</b>                    | Mouse   |
| <b>Isotype</b>                 | Mouse IgG2a   |
| <b>Size</b>                    | 100µL, 50µL   |
| <b>Immunogen</b>               | Purified recombinant fragment of human GRIN3B (AA: 135-276) expressed in E. Coli. |
| <b>Mol wt</b>                  | 113kDa  |
| <b>Species reactivity</b>      | Human   |
| <b>Clonality</b>               | Monoclonal  |
| <b>Recommended application</b> | FCM   |
| <b>Concentration</b>           | N/A   |
| <b>Full name</b>               | N/A   |
| <b>Synonyms</b>                | NR3B;GluN3B   |

This product is for research use only, not for use in human, therapeutic or diagnostic procedure.

### Background

N/A

### Recommended Dilution

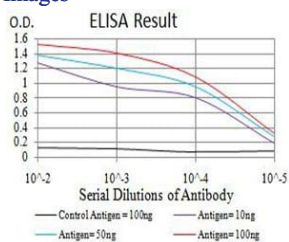
WB: 1:500 - 1:2000

FCM: 1:200 - 1:400

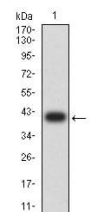
ELISA: 1:10000

Not yet tested in other applications.

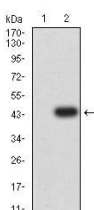
### Images



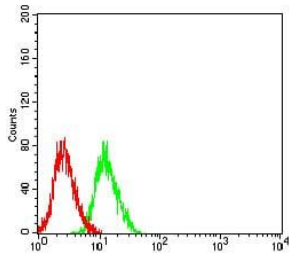
Black line: Control Antigen (100 ng);Purple line: Antigen (10ng); Blue line: Antigen (50 ng); Red line:Antigen (100 ng)



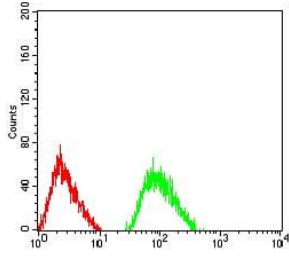
Western blot analysis using GRIN3B mAb against human GRIN3B (AA: 135-276) recombinant protein. (Expected MW is 40.8 kDa)



Western blot analysis using GRIN3B mAb against HEK293 (1) and GRIN3B (AA: 135-276)-hIgGFc transfected HEK293 (2) cell lysate.



Flow cytometric analysis of SH-SY5Y cells using GRIN3B mouse mAb (green) and negative control (red).



Flow cytometric analysis of SK-N-SH cells using GRIN3B mouse mAb (green) and negative control (red).

### Storage

Store at 4°C short term. Aliquot and store at -20°C long term.

501 Changsheng S Rd, Nanhu Dist, Jiaxing, Zhejiang, China

Tel: 86 21 31007137 | E-mail: [save@bt-laboratory.com](mailto:save@bt-laboratory.com) | [www.bt-laboratory.com](http://www.bt-laboratory.com)