

## TBLR1 Monoclonal Antibody

### Description

<b>Product type</b>	Antibody
<b>Code</b>	BT-MCA2824
<b>Host</b>	Mouse
<b>Isotype</b>	Mouse IgG1
<b>Size</b>	100µL, 50µL
<b>Immunogen</b>	Purified recombinant fragment of human TBLR1 expressed in E. Coli.
<b>Mol wt</b>	55.5kDa
<b>Species reactivity</b>	Human,Mouse
<b>Clonality</b>	Monoclonal
<b>Recommended application</b>	WB,IHC,FCM
<b>Concentration</b>	N/A
<b>Full name</b>	N/A
<b>Synonyms</b>	C21;DC42;IRA1;TBL1XR1

This product is for research use only, not for use in human, therapeutic or diagnostic procedure.

### Background

N/A

### Recommended Dilution

WB: 1:500 - 1:2000

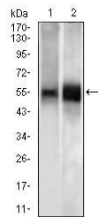
IHC-p: 1:200 - 1:1000

FCM: 1:200 - 1:400

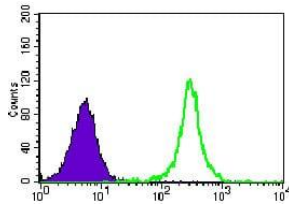
ELISA: 1:10000

Not yet tested in other applications.

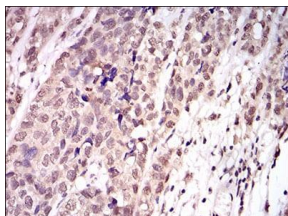
### Images



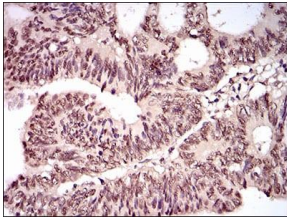
Western blot analysis using TBLR1 mouse mAb against Mouse heart (1) tissue lysate and K562 (2) cell lysate.



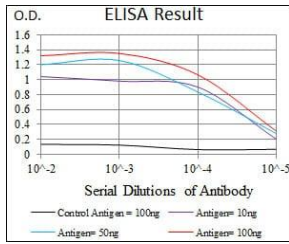
Flow cytometric analysis of K562 cells using TBLR1 mouse mAb (green) and negative control (purple).



Immunohistochemical analysis of paraffin-embedded bladder cancer tissues using TBLR1 mouse mAb with DAB staining.



Immunohistochemical analysis of paraffin-embedded rectum cancer tissues using TBLR1 mouse mAb with DAB staining.



Red: Control Antigen (100ng); Purple: Antigen (10ng); Green: Antigen (50ng); Blue: Antigen (100ng);

### Storage

Store at 4°C short term. Aliquot and store at -20°C long term.

501 Changsheng S Rd, Nanhu Dist, Jiaxing, Zhejiang, China

Tel: 86 21 31007137 | E-mail: [save@bt-laboratory.com](mailto:save@bt-laboratory.com) | [www.bt-laboratory.com](http://www.bt-laboratory.com)