

S100B Monoclonal Antibody

Description

Product type	Antibody
Code	BT-MCA2827
Host	Mouse
Isotype	Mouse IgG1
Size	100µL, 50µL
Immunogen	Purified recombinant fragment of human S100B (AA: 1-92) expressed in E. Coli.
Mol wt	10.7kDa
Species reactivity	Others
Clonality	Monoclonal
Recommended application	IHC,FCM
Concentration	N/A
Full name	N/A
Synonyms	NEF;S100;S100-B;S100beta

This product is for research use only, not for use in human, therapeutic or diagnostic procedure.

Background

This gene encodes a cytoplasmic protein with three cytoskeletal-associated protein-glycine-conserved (CAP-GLY) domains that functions as a deubiquitinating enzyme. Mutations in this gene have been associated with cylindromatosis, multiple familial trichoepithelioma, and Brooke-Spiegler syndrome. Alternate transcriptional splice variants, encoding different isoforms, have been characterized.

Recommended Dilution

WB: 1:500 - 1:2000

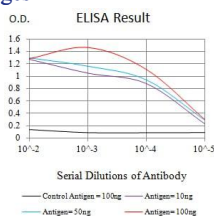
IHC-p: 1:200 - 1:1000

FCM: 1:200 - 1:400

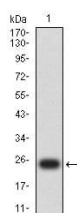
ELISA: 1:10000

Not yet tested in other applications.

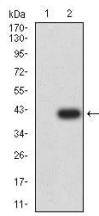
Images



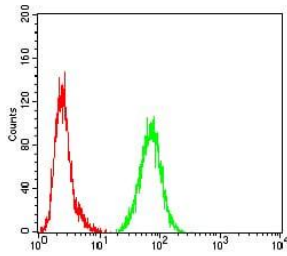
Black line: Control Antigen (100 ng);Purple line: Antigen (10ng); Blue line: Antigen (50 ng); Red line:Antigen (100 ng)



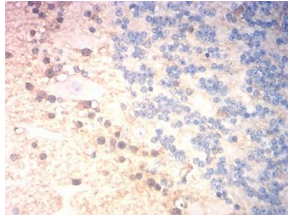
Western blot analysis using S100B mAb against human S100B (AA: 1-92) recombinant protein. (Expected MW is 24.3 kDa)



Western blot analysis using S100B mAb against HEK293 (1) and S100B (AA: 1-92)-hIgGFc transfected HEK293 (2) cell lysate.



Flow cytometric analysis of HeLa cells using S100B mouse mAb (green) and negative control (red).



Immunohistochemical analysis of paraffin-embedded cerebellum tissues using S100B mouse mAb with DAB staining.

Storage

Store at 4°C short term. Aliquot and store at -20°C long term.

501 Changsheng S Rd, Nanhu Dist, Jiaxing, Zhejiang, China

Tel: 86 21 31007137 | E-mail: save@bt-laboratory.com | www.bt-laboratory.com