

THAP11 Monoclonal Antibody

Description

Product type	Antibody
Code	BT-MCA2838
Host	Mouse
Isotype	Mouse IgG1
Size	100µL, 50µL
Immunogen	Purified recombinant fragment of human THAP11 expressed in E. Coli.
Mol wt	44kDa
Species reactivity	Human
Clonality	Monoclonal
Recommended application	WB,IHC,ICC,FCM
Concentration	N/A
Full name	N/A
Synonyms	RONIN;CTG-B43a;CTG-B45d;HRIHFB2206;THAP11

This product is for research use only, not for use in human, therapeutic or diagnostic procedure.

Background

The protein encoded by this gene contains a THAP domain, which is a conserved DNA-binding domain that has striking similarity to the site-specific DNA-binding domain (DBD) of Drosophila P element transposases.

Recommended Dilution

WB: 1:500 - 1:2000

IHC-p: 1:200 - 1:1000

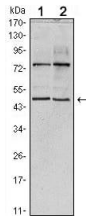
ICC: 1:200 - 1:1000

FCM: 1:200 - 1:400

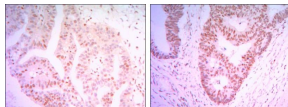
ELISA: 1:10000

Not yet tested in other applications.

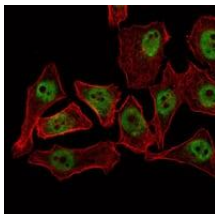
Images



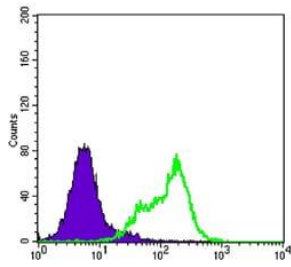
Western blot analysis using THAP11 mouse mAb against HeLa (1) and NTERA-2 (2) cell lysate.



Immunohistochemical analysis of paraffin-embedded colon cancer tissues (left) and ovary cancer tissues (right) using THAP11 mouse mAb with DAB staining.



Immunofluorescence analysis of NTERA-2 cells using THAP11 mouse mAb (green). Red: Actin filaments have been labeled with Alexa Fluor-555 phalloidin.



Flow cytometric analysis of HeLa cells using THAP11 mouse mAb (green) and negative control (purple).

Storage

Store at 4°C short term. Aliquot and store at -20°C long term.

501 Changsheng S Rd, Nanhu Dist, Jiaxing, Zhejiang, China

Tel: 86 21 31007137 | E-mail: save@bt-laboratory.com | www.bt-laboratory.com