

KRT19 Monoclonal Antibody

Description

Product type	Antibody
Code	BT-MCA2840
Host	Mouse
Isotype	Mouse IgG2a
Size	100µL, 50µL
Immunogen	Purified recombinant fragment of human KRT19 (AA: 274-400) expressed in E. Coli.
Mol wt	44.1kDa
Species reactivity	Human
Clonality	Monoclonal
Recommended application	WB,IHC
Concentration	N/A
Full name	N/A
Synonyms	K19;CK19;K1CS

This product is for research use only, not for use in human, therapeutic or diagnostic procedure.

Background

N/A

Recommended Dilution

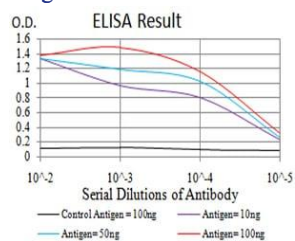
WB: 1:500 - 1:2000

IHC-p: 1:200 - 1:1000

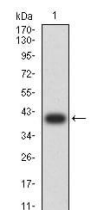
ELISA: 1:10000

Not yet tested in other applications.

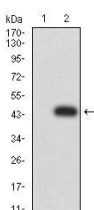
Images



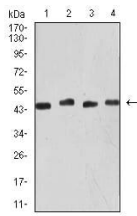
Black line: Control Antigen (100 ng);Purple line: Antigen (10ng); Blue line: Antigen (50 ng); Red line:Antigen (100 ng)



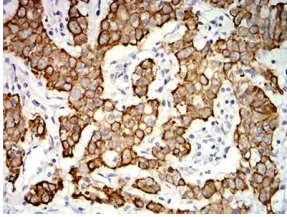
Western blot analysis using KRT19 mAb against human KRT19 (AA: 274-400) recombinant protein. (Expected MW is 40 kDa)



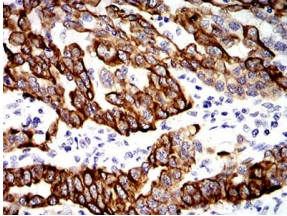
Western blot analysis using KRT19 mAb against HEK293 (1) and KRT19 (AA: 274-400)-hlgFc transfected HEK293 (2) cell lysate.



Western blot analysis using KRT19 mouse mAb against MCF-7 (1), SW480 (2), SW620 (3), and HCT116 (4) cell lysate.



Immunohistochemical analysis of paraffin-embedded stomach cancer tissues using KRT19 mouse mAb with DAB staining.



Immunohistochemical analysis of paraffin-embedded endometrial cancer tissues using KRT19 mouse mAb with DAB staining.

Storage

Store at 4°C short term. Aliquot and store at -20°C long term.

501 Changsheng S Rd, Nanhu Dist, Jiaxing, Zhejiang, China

Tel: 86 21 31007137 | E-mail: save@bt-laboratory.com | www.bt-laboratory.com