

IKBKB Monoclonal Antibody

Description

Product type	Antibody
Code	BT-MCA2844
Host	Mouse
Isotype	Mouse IgG1
Size	100µL, 50µL
Immunogen	Purified recombinant fragment of IKBKB expressed in E. Coli.
Mol wt	N/A
Species reactivity	Human
Clonality	Monoclonal
Recommended application	IHC
Concentration	N/A
Full name	N/A
Synonyms	IKBKB

This product is for research use only, not for use in human, therapeutic or diagnostic procedure.

Background

IKBKB (Inhibitor of kappa light polypeptide gene enhancer in B-cells, kinase beta, also called IKK2/IKKB), is a member of the IKK complex which is composed of IKK-alpha, IKK-beta, IKK-gamma and IKAP. Phosphorylation of I-Kappa-B on a serine residue by the IKK complex frees NF-kB from I-Kappa-B and marks it for degradation via ubiquitination. IKK-beta has been shown to activate NF-kB and phosphorylate IKB-alpha and beta. Phosphorylation of 2 sites at the activation loop of IKK-beta is essential for activation of IKK by TNF and IL1. Once activated, IKK-beta autophosphorylates which in turn decreases IKK activity and prevents prolonged activation of the inflammatory response. Additionally, IKK-beta activity can also be regulated by MEKK-1.

Recommended Dilution

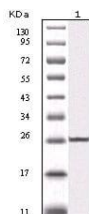
WB: 1:500 - 1:2000

IHC-p: 1:200 - 1:1000

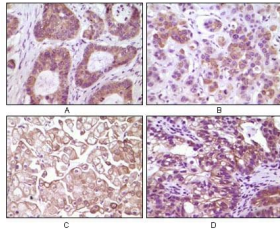
ELISA: 1:10000

Not yet tested in other applications.

Images



Western blot analysis using IKBKB mouse mAb against truncated IKBKB recombinant protein (1).



Immunohistochemical analysis of paraffin-embedded human colon carcinoma(A), breast carcinoma(B), kidney cell carcinoma(C), bladder carcinoma tumor(D), showing membrane and cytoplasmic localization using IKBKB mouse mAb with DAB staining.

Storage

Store at 4°C short term. Aliquot and store at -20°C long term.

501 Changsheng S Rd, Nanhu Dist, Jiaxing, Zhejiang, China

Tel: 86 21 31007137 | E-mail: save@bt-laboratory.com | www.bt-laboratory.com