

SDC1 Monoclonal Antibody

Description

Product type	Antibody
Code	BT-MCA2845
Host	Mouse
Isotype	Mouse IgG1
Size	100µL, 50µL
Immunogen	Purified recombinant fragment of human SDC1 (AA: 28-171) expressed in E. Coli.
Mol wt	32.5kDa
Species reactivity	Human,Mouse
Clonality	Monoclonal
Recommended application	WB,ICC,FCM
Concentration	N/A
Full name	N/A
Synonyms	SDC;CD138;SYND1;syndecan

This product is for research use only, not for use in human, therapeutic or diagnostic procedure.

Background

The protein encoded by this gene is a transmembrane (type I) heparan sulfate proteoglycan and is a member of the syndecan proteoglycan family. The syndecans mediate cell binding, cell signaling, and cytoskeletal organization and syndecan receptors are required for internalization of the HIV-1 tat protein. The syndecan-1 protein functions as an integral membrane protein and participates in cell proliferation, cell migration and cell-matrix interactions via its receptor for extracellular matrix proteins. Altered syndecan-1 expression has been detected in several different tumor types. While several transcript variants may exist for this gene, the full-length nature of only two have been described to date. These two represent the major variants of this gene and encode the same protein.

Recommended Dilution

WB: 1:500 - 1:2000

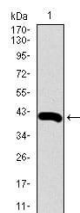
ICC: 1:200 - 1:1000

FCM: 1:200 - 1:400

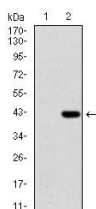
ELISA: 1:10000

Not yet tested in other applications.

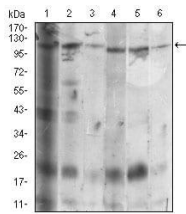
Images



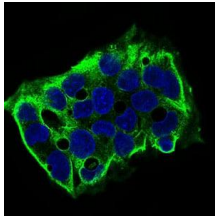
Western blot analysis using SDC1 mAb against human SDC1 (AA: 28-171) recombinant protein.
(Expected MW is 44.4 kDa)



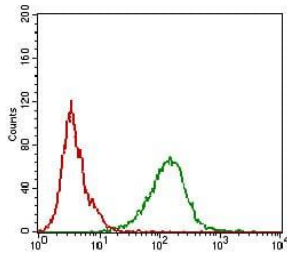
Western blot analysis using SDC1 mAb against HEK293 (1) and SDC1 (AA: 28-171)-hlgGfc transfected HEK293 (2) cell lysate.



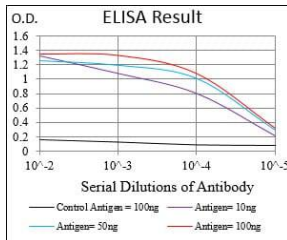
Western blot analysis using SDC1 mouse mAb against HeLa (1), MCF-7 (2), HepG2 (3), T47D (4), Jurkat (5), NIH/3T3 (6) cell lysate.



Immunofluorescence analysis of HepG2 cells using SDC1 mouse mAb (green). Blue: DRAQ5 fluorescent DNA dye. Secondary antibody from Fisher (Cat#: 35503)



Flow cytometric analysis of A431 cells using SDC1 mouse mAb (green) and negative control (red).



Black line: Control Antigen (100 ng); Purple line: Antigen(10ng); Blue line: Antigen (50 ng); Red line: Antigen (100 ng);

Storage

Store at 4°C short term. Aliquot and store at -20°C long term.

501 Changsheng S Rd, Nanhu Dist, Jiaxing, Zhejiang, China

Tel: 86 21 31007137 | E-mail: save@bt-laboratory.com | www.bt-laboratory.com