

PLA2G12A Monoclonal Antibody

Description

Product type	Antibody
Code	BT-MCA2853
Host	Mouse
Isotype	Mouse IgG1
Size	100 μ L, 50 μ L
Immunogen	Purified recombinant fragment of human PLA2G12A (AA: 21-189) expressed in E. Coli.
Mol wt	21kDa
Species reactivity	Human
Clonality	Monoclonal
Recommended application	FCM
Concentration	N/A
Full name	N/A
Synonyms	GXII;ROSSY;PLA2G12

This product is for research use only, not for use in human, therapeutic or diagnostic procedure.

Background

N/A

Recommended Dilution

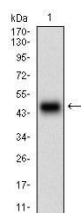
WB: 1:500 - 1:2000

FCM: 1:200 - 1:400

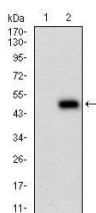
ELISA: 1:10000

Not yet tested in other applications.

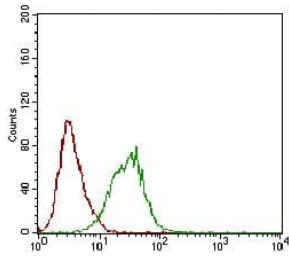
Images



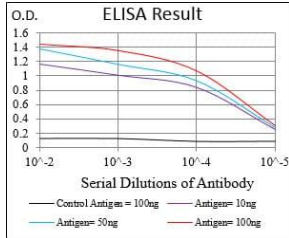
Western blot analysis using PLA2G12A mAb against human PLA2G12A (AA: 21-189) recombinant protein. (Expected MW is 44.5 kDa)



Western blot analysis using PLA2G12A mAb against HEK293 (1) and PLA2G12A (AA: 21-189)-hIgGfc transfected HEK293 (2) cell lysate.



Flow cytometric analysis of HeLa cells using PLA2G12A mouse mAb (green) and negative control (red).



Black line: Control Antigen (100 ng); Purple line: Antigen(10ng); Blue line: Antigen (50 ng); Red line: Antigen (100 ng);

Storage

Store at 4°C short term. Aliquot and store at -20°C long term.

501 Changsheng S Rd, Nanhu Dist, Jiaxing, Zhejiang, China

Tel: 86 21 31007137 | E-mail: save@bt-laboratory.com | www.bt-laboratory.com