

MTDH Monoclonal Antibody

Description

Product type	Antibody
Code	BT-MCA2855
Host	Mouse
Isotype	Mouse IgG1
Size	100µL, 50µL
Immunogen	Purified recombinant fragment of human MTDH (AA: 200-450) expressed in mammalian.
Mol wt	75KDa
Species reactivity	Human,Monkey
Clonality	Monoclonal
Recommended application	WB,IHC,ICC,FCM
Concentration	N/A
Full name	N/A
Synonyms	3D3;AEG1;AEG-1;LYRIC;LYRIC/3D3

This product is for research use only, not for use in human, therapeutic or diagnostic procedure.

Background

MTDH (Metadherin) is a Protein Coding gene. Diseases associated with MTDH include Tongue Carcinoma and Gallbladder Adenocarcinoma. Among its related pathways are Gastric Cancer Network 2 and Validated targets of C-MYC transcriptional activation. Gene Ontology (GO) annotations related to this gene include double-stranded RNA binding. An important paralog of this gene is MAMSTR.

Recommended Dilution

WB: 1:500 - 1:2000

IHC-p: 1:200 - 1:1000

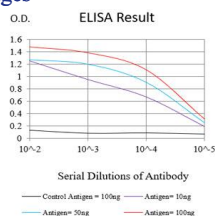
ICC: 1:50 - 1:200

FCM: 1:200 - 1:400

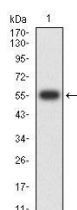
ELISA: 1:10000

Not yet tested in other applications.

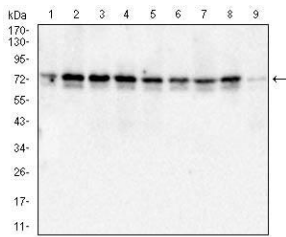
Images



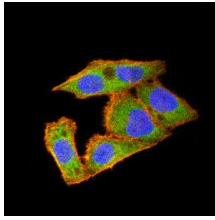
Black line: Control Antigen (100 ng);Purple line: Antigen (10ng); Blue line: Antigen (50 ng); Red line:Antigen (100 ng)



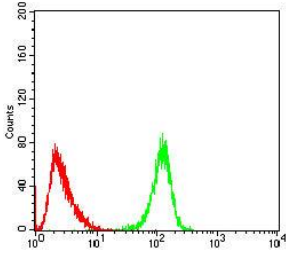
Western blot analysis using MTDH mAb against human MTDH (AA: 200-450) recombinant protein. (Expected MW is 57.8 kDa)



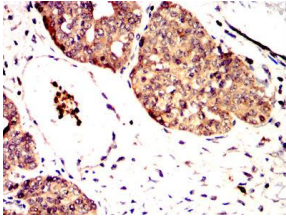
Western blot analysis using MTDH mouse mAb against MCF-7 (1), T47D (2), Jurkat (3), K562 (4), HeLa(5), PC-3(6), HepG2(7), A431(8) and COS7 (9) cell lysate.



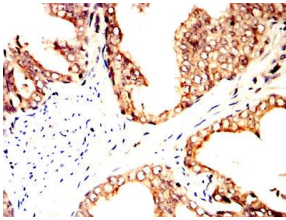
Immunofluorescence analysis of HeLa cells using MTDH mouse mAb (green). Blue: DRAQ5 fluorescent DNA dye. Red: Actin filaments have been labeled with Alexa Fluor- 555 phalloidin. Secondary antibody from Fisher (Cat#: 35503)



Flow cytometric analysis of HeLa cells using MTDH mouse mAb (green) and negative control (red).



Immunohistochemical analysis of paraffin-embedded ovarian cancer tissues using MTDH mouse mAb with DAB staining.



Immunohistochemical analysis of paraffin-embedded prostate cancer tissues using MTDH mouse mAb with DAB staining.

Storage

Store at 4°C short term. Aliquot and store at -20°C long term.

501 Changsheng S Rd, Nanhu Dist, Jiaxing, Zhejiang, China

Tel: 86 21 31007137 | E-mail: save@bt-laboratory.com | www.bt-laboratory.com