

CCR10 Monoclonal Antibody

Description

| | |
|--------------------------------|--|
| Product type | Antibody |
| Code | BT-MCA2860 |
| Host | Mouse |
| Isotype | Mouse IgG1 |
| Size | 100µL, 50µL |
| Immunogen | Purified recombinant fragment of human CCR10 (AA: extra mix) expressed in E. Coli. |
| Mol wt | 38.4kDa |
| Species reactivity | Others |
| Clonality | Monoclonal |
| Recommended application | IHC,ICC,FCM |
| Concentration | N/A |
| Full name | N/A |
| Synonyms | GPR2 |

This product is for research use only, not for use in human, therapeutic or diagnostic procedure.

Background

Chemokines are a group of small (approximately 8 to 14 kD), mostly basic, structurally related molecules that regulate cell trafficking of various types of leukocytes through interactions with a subset of 7-transmembrane, G protein-coupled receptors. Chemokines also play fundamental roles in the development, homeostasis, and function of the immune system, and they have effects on cells of the central nervous system as well as on endothelial cells involved in angiogenesis or angiostasis. Chemokines are divided into 2 major subfamilies, CXC and CC, based on the arrangement of the first 2 of the 4 conserved cysteine residues; the 2 cysteines are separated by a single amino acid in CXC chemokines and are adjacent in CC chemokines. CCR10 is the receptor for CCL27 (SCYA27; MIM 604833); CCR10-CCL27 interactions are involved in T cell-mediated skin inflammation (Homey et al., 2002 [PubMed 11821900]).[supplied by OMIM, Mar 2008]

Recommended Dilution

WB: 1:500 - 1:2000

IHC-p: 1:200 - 1:1000

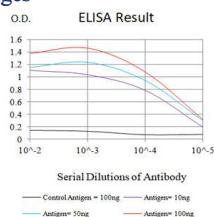
ICC: 1:200 - 1:1000

FCM: 1:200 - 1:400

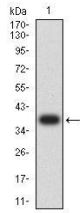
ELISA: 1:10000

Not yet tested in other applications.

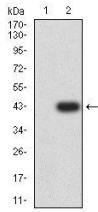
Images



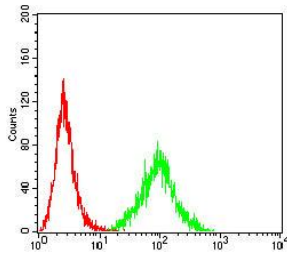
Black line: Control Antigen (100 ng);Purple line: Antigen (10ng); Blue line: Antigen (50 ng); Red line:Antigen (100 ng)



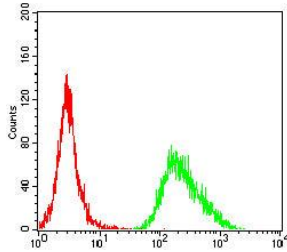
Western blot analysis using CCR10 mAb against human CCR10 (AA: extra mix) recombinant protein.
(Expected MW is 38 kDa)



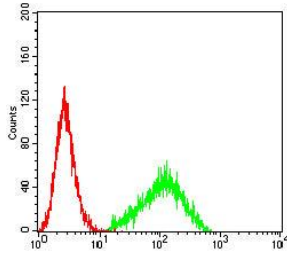
Western blot analysis using CCR10 mAb against HEK293-6e (1) and CCR10 (AA: extra mix)-hlgGfC transfected HEK293-6e (2) cell lysate.



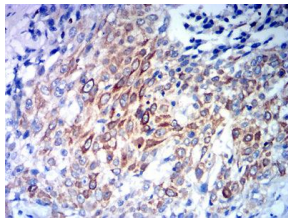
Flow cytometric analysis of HL-60 cells using CCR10 mouse mAb (green) and negative control (red).



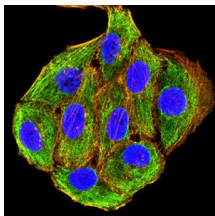
Flow cytometric analysis of MOLT4 cells using CCR10 mouse mAb (green) and negative control (red).



Flow cytometric analysis of THP-1 cells using CCR10 mouse mAb (green) and negative control (red).



Immunohistochemical analysis of paraffin-embedded esophageal cancer tissues using CCR10 mouse mAb with DAB staining.



Immunofluorescence analysis of HeLa cells using CCR10 mouse mAb (green). Blue: DRAQ5 fluorescent DNA dye. Red: Actin filaments have been labeled with Alexa Fluor-555 phalloidin. Secondary antibody from Fisher (Cat#: 35503)

Storage

Store at 4°C short term. Aliquot and store at -20°C long term.

501 Changsheng S Rd, Nanhu Dist, Jiaxing, Zhejiang, China

Tel: 86 21 31007137 | E-mail: save@bt-laboratory.com | www.bt-laboratory.com