

HLA-F Monoclonal Antibody

Description

Product type	Antibody
Code	BT-MCA2862
Host	Mouse
Isotype	Mouse IgG2b
Size	100µL, 50µL
Immunogen	Purified recombinant fragment of human HLA-F (AA: 22-305) expressed in E. Coli.
Mol wt	39kDa
Species reactivity	Others
Clonality	Monoclonal
Recommended application	WB,FCM
Concentration	N/A
Full name	N/A
Synonyms	HIAF;CDA12;HLA-5.4;HLA-CDA12

This product is for research use only, not for use in human, therapeutic or diagnostic procedure.

Background

This gene belongs to the HLA class I heavy chain paralogues. It encodes a non-classical heavy chain that forms a heterodimer with a beta-2 microglobulin light chain, with the heavy chain anchored in the membrane. Unlike most other HLA heavy chains, this molecule is localized in the endoplasmic reticulum and Golgi apparatus, with a small amount present at the cell surface in some cell types. It contains a divergent peptide-binding groove, and is thought to bind a restricted subset of peptides for immune presentation. This gene exhibits few polymorphisms. Multiple transcript variants encoding different isoforms have been found for this gene. These variants lack a coding exon found in transcripts from other HLA paralogues due to an altered splice acceptor site, resulting in a shorter cytoplasmic domain.

Recommended Dilution

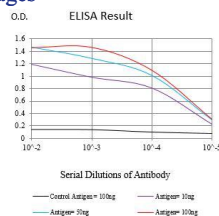
WB: 1:500 - 1:2000

FCM: 1:200 - 1:400

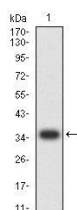
ELISA: 1:10000

Not yet tested in other applications.

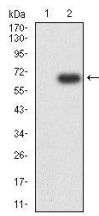
Images



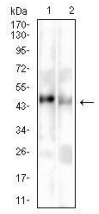
Black line: Control Antigen (100 ng);Purple line: Antigen (10ng); Blue line: Antigen (50 ng); Red line:Antigen (100 ng)



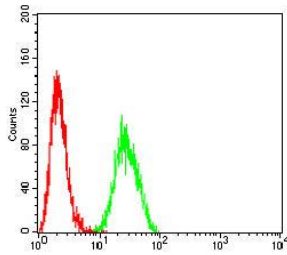
Western blot analysis using HLA-F mAb against human HLA-F (AA: 22-305) recombinant protein. (Expected MW is 35.6 kDa)



Western blot analysis using HLA-F mAb against HEK293-6e (1) and HLA-F (AA: 22-305)-hlgGFc transfected HEK293-6e (2) cell lysate.



Western blot analysis using HLA-F mouse mAb against Mouse Liver (1) and Rat Liver (2) tissue lysate.



Flow cytometric analysis of THP-1 cells using HLA-F mouse mAb (green) and negative control (red).

Storage

Store at 4°C short term. Aliquot and store at -20°C long term.

501 Changsheng S Rd, Nanhu Dist, Jiaxing, Zhejiang, China

Tel: 86 21 31007137 | E-mail: save@bt-laboratory.com | www.bt-laboratory.com