

NAA10 Monoclonal Antibody

Description

Product type	Antibody
Code	BT-MCA2863
Host	Mouse
Isotype	Mouse IgG1
Size	100µL, 50µL
Immunogen	Purified recombinant fragment of human NAA10 (AA: 111-235) expressed in E. Coli.
Mol wt	26.5kDa
Species reactivity	Human,Mouse,Monkey
Clonality	Monoclonal
Recommended application	WB,ICC,FCM
Concentration	N/A
Full name	N/A
Synonyms	TE2;ARD1;NATD;ARD1A;ARD1P;OGDNS;DXS707;MCOPS1

This product is for research use only, not for use in human, therapeutic or diagnostic procedure.

Background

N/A

Recommended Dilution

WB: 1:500 - 1:2000

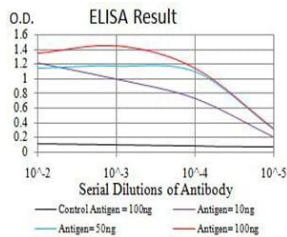
ICC: 1:200 - 1:1000

FCM: 1:200 - 1:400

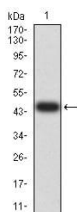
ELISA: 1:10000

Not yet tested in other applications.

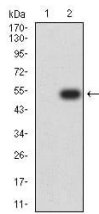
Images



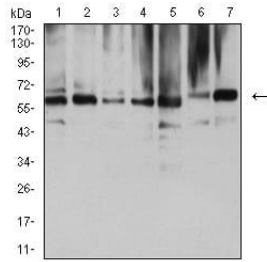
Black line: Control Antigen (100 ng);Purple line: Antigen (10ng); Blue line: Antigen (50 ng); Red line:Antigen (100 ng)



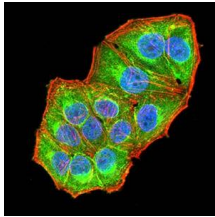
Western blot analysis using NAA10 mAb against human NAA10 (AA: 111-235) recombinant protein. (Expected MW is 47.2 kDa)



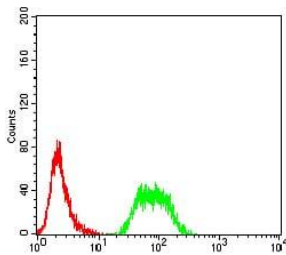
Western blot analysis using NAA10 mAb against HEK293 (1) and NAA10 (AA: 111-235)-hIgGFc transfected HEK293 (2) cell lysate.



Western blot analysis using NAA10 mouse mAb against COS7 (1), HEK293 (2), HL-60 (3), MCF-7 (4), HeLa (5), NIH/3T3 (6), and C2C12 (7) cell lysate.



Immunofluorescence analysis of HeLa cells using NAA10 mouse mAb (green). Blue: DRAQ5 fluorescent DNA dye. Red: Actin filaments have been labeled with Alexa Fluor- 555 phalloidin. Secondary antibody from Fisher (Cat#: 35503)



Flow cytometric analysis of SMMC-7721 cells using NAA10 mouse mAb (green) and negative control (red).

Storage

Store at 4°C short term. Aliquot and store at -20°C long term.

501 Changsheng S Rd, Nanhu Dist, Jiaxing, Zhejiang, China

Tel: 86 21 31007137 | E-mail: save@bt-laboratory.com | www.bt-laboratory.com