

## FGL1 Monoclonal Antibody

### Description

<b>Product type</b>	Antibody
<b>Code</b>	BT-MCA2865
<b>Host</b>	Mouse
<b>Isotype</b>	Mouse IgG2a
<b>Size</b>	100µL, 50µL
<b>Immunogen</b>	Purified recombinant fragment of human FGL1 (AA: 23-312) expressed in E. Coli.
<b>Mol wt</b>	36.4kDa
<b>Species reactivity</b>	Others
<b>Clonality</b>	Monoclonal
<b>Recommended application</b>	IHC,ICC,FCM
<b>Concentration</b>	N/A
<b>Full name</b>	N/A
<b>Synonyms</b>	HPS;HFREP1;HP-041;LFIRE1;LFIRE-1

This product is for research use only, not for use in human, therapeutic or diagnostic procedure.

### Background

Fibrinogen-like 1 is a member of the fibrinogen family. This protein is homologous to the carboxy terminus of the fibrinogen beta- and gamma- subunits which contains the four conserved cysteines of fibrinogens and fibrinogen related proteins. However, this protein lacks the platelet-binding site, cross-linking region and a thrombin-sensitive site which are necessary for fibrin clot formation. This protein may play a role in the development of hepatocellular carcinomas. Four alternatively spliced transcript variants encoding the same protein exist for this gene. [provided by RefSeq, Jul 2008]

### Recommended Dilution

WB: 1:500 - 1:2000

IHC-p: 1:200-1:1000

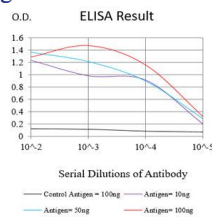
ICC: 1:200 - 1:1000

FCM: 1:200-1:400

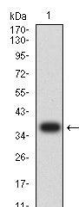
ELISA: 1:10000

Not yet tested in other applications.

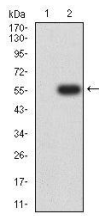
### Images



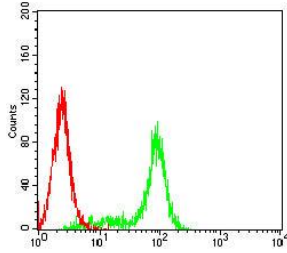
Black line: Control Antigen (100 ng);Purple line: Antigen (10ng); Blue line: Antigen (50 ng); Red line: Antigen (100 ng)



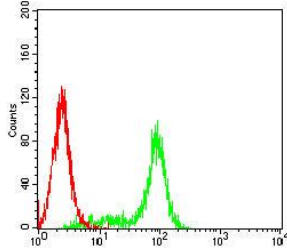
Western blot analysis using FGL1 mAb against human FGL1 (AA: 23-312) recombinant protein. (Expected MW is 36.9 kDa)



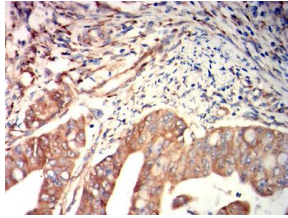
Western blot analysis using FGL1 mAb against HEK293-6e (1) and FGL1 (AA: 23-312)-hIgGFc transfected HEK293-6e (2) cell lysate.



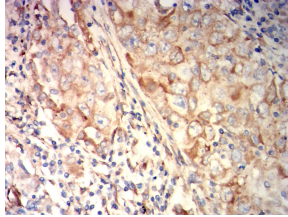
Flow cytometric analysis of HeLa cells using FGL1 mouse mAb (green) and negative control (red).



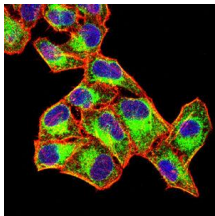
Flow cytometric analysis of HepG2 cells using FGL1 mouse mAb (green) and negative control (red).



Immunohistochemical analysis of paraffin-embedded rectal cancer tissues using FGL1 mouse mAb with DAB staining.



Immunohistochemical analysis of paraffin-embedded lung cancer tissues using FGL1 mouse mAb with DAB staining.



Immunofluorescence analysis of HeLa cells using FGL1 mouse mAb (green). Blue: DRAQ5 fluorescent DNA dye. Red: Actin filaments have been labeled with Alexa Fluor- 555 phalloidin. Secondary antibody from Fisher (Cat#: 35503)

## Storage

Store at 4°C short term. Aliquot and store at -20°C long term.

501 Changsheng S Rd, Nanhu Dist, Jiaxing, Zhejiang, China

Tel: 86 21 31007137 | E-mail: [save@bt-laboratory.com](mailto:save@bt-laboratory.com) | [www.bt-laboratory.com](http://www.bt-laboratory.com)