

CD158E1 Monoclonal Antibody

Description

| | |
|--------------------------------|--|
| Product type | Antibody |
| Code | BT-MCA2867 |
| Host | Mouse |
| Isotype | Mouse IgG1 |
| Size | 100µL, 50µL |
| Immunogen | Purified recombinant fragment of human CD158E1 (AA: extra 206-340) expressed in E. Coli. |
| Mol wt | 49kDa |
| Species reactivity | Human |
| Clonality | Monoclonal |
| Recommended application | IHC,FCM |
| Concentration | N/A |
| Full name | N/A |
| Synonyms | KIR3DL1;KIR;NKB1;NKAT3;NKB1B;NKAT-3;KIR3DL1/S1 |

This product is for research use only, not for use in human, therapeutic or diagnostic procedure.

Background

N/A

Recommended Dilution

WB: 1:500 - 1:2000

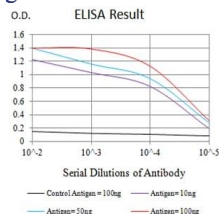
IHC-p: 1:200 - 1:1000

FCM: 1:200 - 1:400

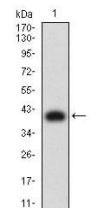
ELISA: 1:10000

Not yet tested in other applications.

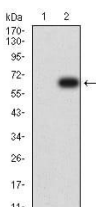
Images



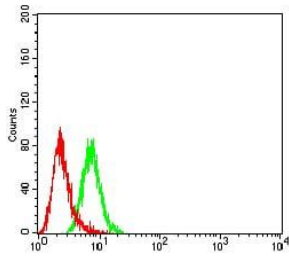
Black line: Control Antigen (100 ng);Purple line: Antigen (10ng); Blue line: Antigen (50 ng); Red line:Antigen (100 ng)



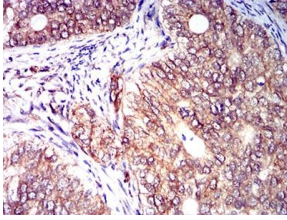
Western blot analysis using CD158E1 mAb against human CD158E1 (AA: extra 206-340) recombinant protein. (Expected MW is 40.5 kDa)



Western blot analysis using CD158E1 mAb against HEK293 (1) and CD158E1 (AA: extra 206-340)-hlgGfc transfected HEK293 (2) cell lysate.



Flow cytometric analysis of HL-60 cells using CD158E1 mouse mAb (green) and negative control (red).



Immunohistochemical analysis of paraffin-embedded cervical cancer tissues using CD158E1 mouse mAb with DAB staining.

Storage

Store at 4°C short term. Aliquot and store at -20°C long term.

501 Changsheng S Rd, Nanhu Dist, Jiaxing, Zhejiang, China

Tel: 86 21 31007137 | E-mail: save@bt-laboratory.com | www.bt-laboratory.com