

VCP Monoclonal Antibody

Description

Product type	Antibody
Code	BT-MCA2873
Host	Mouse
Isotype	Mouse IgG1
Size	100µL, 50µL
Immunogen	Purified recombinant fragment of human VCP (AA:707-806) expressed in Mammalian system
Mol wt	89.3kDa
Species reactivity	Others
Clonality	Monoclonal
Recommended application	WB,ICC,FCM
Concentration	N/A
Full name	N/A
Synonyms	p97;TERA;CDC48;FTDALS6

This product is for research use only, not for use in human, therapeutic or diagnostic procedure.

Background

This protein forms a homohexameric complex that interacts with a variety of cofactors and extracts ubiquitinated proteins from lipid membranes or protein complexes. Mutations in this gene cause IBMPFD (inclusion body myopathy with paget disease of bone and frontotemporal dementia), ALS (amyotrophic lateral sclerosis) and Charcot-Marie-Tooth disease in human patients.

Recommended Dilution

WB: 1:500 - 1:2000

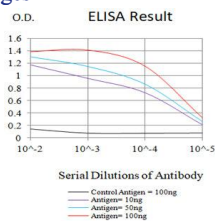
ICC: 1:200 - 1:1000

FCM: 1:200 - 1:400

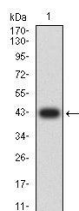
ELISA: 1:10000

Not yet tested in other applications.

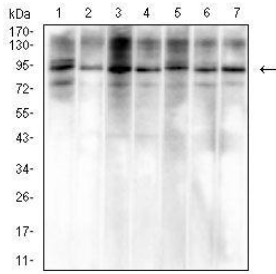
Images



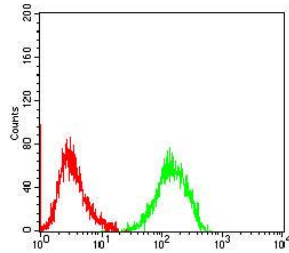
Black line: Control Antigen (100 ng);Purple line: Antigen (10ng); Blue line: Antigen (50 ng); Red line:Antigen (100 ng)



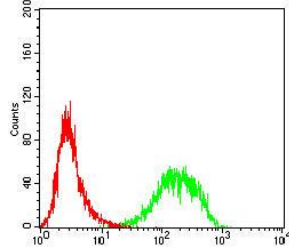
Western blot analysis using VCP mAb against human VCP (AA:707-806) recombinant protein. (Expected MW is 42 kDa)



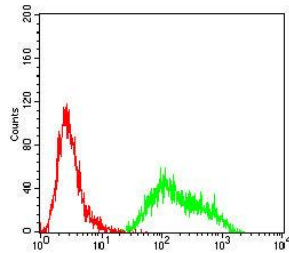
Western blot analysis using VCP mouse mAb against HeLa (1), A549 (2), NIH/3T3 (3), Raw264.7 (4), SH-SY5Y (5), MCF-7 (6), and A431 (7) cell lysate.



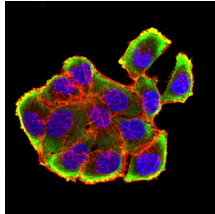
Flow cytometric analysis of MOLT4 cells using VCP mouse mAb (green) and negative control (red).



Flow cytometric analysis of HL-60 cells using VCP mouse mAb (green) and negative control (red).



Flow cytometric analysis of THP-1 cells using VCP mouse mAb (green) and negative control (red).



Immunofluorescence analysis of HeLa cells using VCP mouse mAb (green). Blue: DRAQ5 fluorescent DNA dye. Red: Actin filaments have been labeled with Alexa Fluor- 555 phalloidin. Secondary antibody from Fisher (Cat#: 35503)

Storage

Store at 4°C short term. Aliquot and store at -20°C long term.

501 Changsheng S Rd, Nanhu Dist, Jiaxing, Zhejiang, China

Tel: 86 21 31007137 | E-mail: save@bt-laboratory.com | www.bt-laboratory.com