

## CD101 Monoclonal Antibody

### Description

<b>Product type</b>	Antibody
<b>Code</b>	BT-MCA2885
<b>Host</b>	Mouse
<b>Isotype</b>	Mouse IgG1
<b>Size</b>	100µL, 50µL
<b>Immunogen</b>	Purified recombinant fragment of human CD101 (AA: extra 22-168) expressed in E. Coli.
<b>Mol wt</b>	115kDa
<b>Species reactivity</b>	Human
<b>Clonality</b>	Monoclonal
<b>Recommended application</b>	Others
<b>Concentration</b>	N/A
<b>Full name</b>	N/A
<b>Synonyms</b>	V7;IGSF2;EWI-101

This product is for research use only, not for use in human, therapeutic or diagnostic procedure.

### Background

CD101 (CD101 Molecule) is a Protein Coding gene. Diseases associated with CD101 include Langerhans Cell Histiocytosis and Histiocytosis. Among its related pathways are Innate Lymphoid Cell Differentiation Pathways and Innate Immune System. Gene Ontology (GO) annotations related to this gene include hydrolase activity, acting on carbon-nitrogen (but not peptide) bonds, in cyclic amides. An important paralog of this gene is IGSF3.

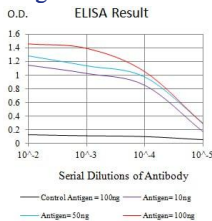
### Recommended Dilution

WB: 1:500 - 1:2000

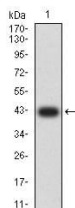
ELISA: 1:10000

Not yet tested in other applications.

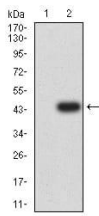
### Images



Black line: Control Antigen (100 ng); Purple line: Antigen (10ng); Blue line: Antigen (50 ng); Red line: Antigen (100 ng)



Western blot analysis using CD101 mAb against human CD101 (AA: extra 22-168) recombinant protein. (Expected MW is 42.2 kDa)



Western blot analysis using CD101 mAb against HEK293 (1) and CD101 (AA: extra 22-168)-hIgGFc transfected HEK293 (2) cell lysate.

### Storage

Store at 4°C short term. Aliquot and store at -20°C long term.

501 Changsheng S Rd, Nanhu Dist, Jiaxing, Zhejiang, China

Tel: 86 21 31007137 | E-mail: [save@bt-laboratory.com](mailto:save@bt-laboratory.com) | [www.bt-laboratory.com](http://www.bt-laboratory.com)