

## MYLK Monoclonal Antibody

### Description

<b>Product type</b>	Antibody
<b>Code</b>	BT-MCA2886
<b>Host</b>	Mouse
<b>Isotype</b>	Mouse IgG1
<b>Size</b>	100µL, 50µL
<b>Immunogen</b>	Purified recombinant fragment of human MYLK (AA:1375-1524) expressed in E. Coli.
<b>Mol wt</b>	210kDa
<b>Species reactivity</b>	Others
<b>Clonality</b>	Monoclonal
<b>Recommended application</b>	WB,IHC,ICC,FCM
<b>Concentration</b>	N/A
<b>Full name</b>	N/A
<b>Synonyms</b>	KRP;AAT7;MLCK;MLCK1;MMIHS;MYLK1;smMLCK;MLCK108;MLCK210;MSTP083

**This product is for research use only, not for use in human, therapeutic or diagnostic procedure.**

### Background

This gene, a muscle member of the immunoglobulin gene superfamily, encodes myosin light chain kinase which is a calcium/calmodulin dependent enzyme. This kinase phosphorylates myosin regulatory light chains to facilitate myosin interaction with actin filaments to produce contractile activity. This gene encodes both smooth muscle and nonmuscle isoforms. In addition, using a separate promoter in an intron in the 3' region, it encodes telokin, a small protein identical in sequence to the C-terminus of myosin light chain kinase, that is independently expressed in smooth muscle and functions to stabilize unphosphorylated myosin filaments. A pseudogene is located on the p arm of chromosome 3. Four transcript variants that produce four isoforms of the calcium/calmodulin dependent enzyme have been identified as well as two transcripts that produce two isoforms of telokin. Additional variants have been identified but lack full length transcripts.

### Recommended Dilution

WB: 1:500 - 1:2000

IHC-p: 1:200-1:1000

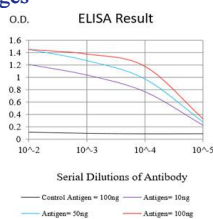
ICC: 1:200 - 1:1000

FCM: 1:200-1:400

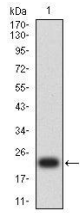
ELISA: 1:10000

Not yet tested in other applications.

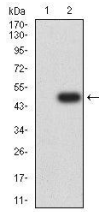
### Images



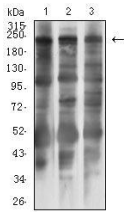
Black line: Control Antigen (100 ng);Purple line: Antigen (10ng); Blue line: Antigen (50 ng); Red line: Antigen (100 ng)



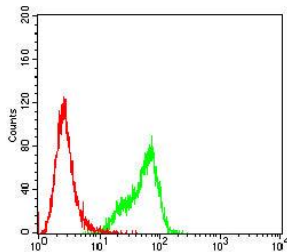
Western blot analysis using MYLK mAb against human MYLK (AA:1375-1524) recombinant protein. (Expected MW is 20.4 kDa)



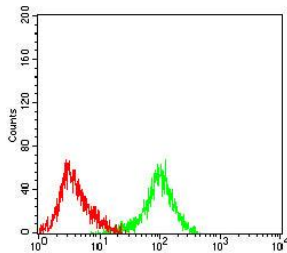
Western blot analysis using MYLK mAb against HEK293-6e (1) and MYLK (AA:1375-1524)-hIgGFc transfected HEK293-6e (2) cell lysate.



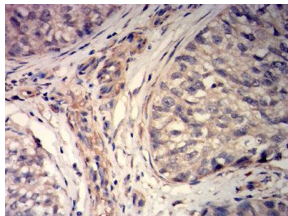
Western blot analysis using MYLK mouse mAb against PC-3 (1), C2C12 (2), and HeLa (3) cell lysate.



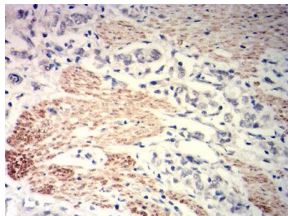
Flow cytometric analysis of HeLa cells using MYLK mouse mAb (green) and negative control (red).



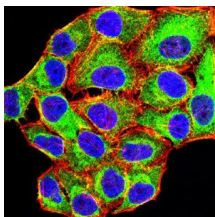
Flow cytometric analysis of LNCAP cells using MYLK mouse mAb (green) and negative control (red).



Immunohistochemical analysis of paraffin-embedded bladder Cancer tissues using MYLK mouse mAb with DAB staining.



Immunohistochemical analysis of paraffin-embedded gastric cancer tissues using MYLK mouse mAb with DAB staining.



Immunofluorescence analysis of HeLa cells using MYLK mouse mAb (green). Blue: DRAQ5 fluorescent DNA dye. Red: Actin filaments have been labeled with Alexa Fluor- 555 phalloidin. Secondary antibody from Fisher (Cat#: 35503)

## Storage

Store at 4°C short term. Aliquot and store at -20°C long term.

501 Changsheng S Rd, Nanhu Dist, Jiaxing, Zhejiang, China

Tel: 86 21 31007137 | E-mail: [save@bt-laboratory.com](mailto:save@bt-laboratory.com) | [www.bt-laboratory.com](http://www.bt-laboratory.com)