

KRT19 Monoclonal Antibody

Description

Product type	Antibody
Code	BT-MCA2888
Host	Mouse
Isotype	Mouse IgG1
Size	100µL, 50µL
Immunogen	Purified recombinant fragment of human KRT19 (AA: 80-400) expressed in E. Coli.
Mol wt	44.1kDa
Species reactivity	Others
Clonality	Monoclonal
Recommended application	WB,FCM
Concentration	N/A
Full name	N/A
Synonyms	K19;CK19;K1CS

This product is for research use only, not for use in human, therapeutic or diagnostic procedure.

Background

The protein encoded by this gene is a member of the keratin family. The keratins are intermediate filament proteins responsible for the structural integrity of epithelial cells and are subdivided into cytokeratins and hair keratins. The type I cytokeratins consist of acidic proteins which are arranged in pairs of heterotypic keratin chains. Unlike its related family members, this smallest known acidic cytokeratin is not paired with a basic cytokeratin in epithelial cells. It is specifically expressed in the periderm, the transiently superficial layer that envelops the developing epidermis. The type I cytokeratins are clustered in a region of chromosome 17q12-q21. [provided by RefSeq, Jul 2008]

Recommended Dilution

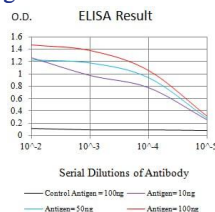
WB: 1:500 - 1:2000

FCM: 1:200 - 1:400

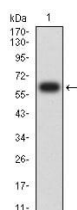
ELISA: 1:10000

Not yet tested in other applications.

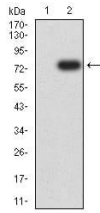
Images



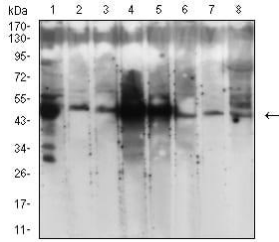
Black line: Control Antigen (100 ng);Purple line: Antigen (10ng); Blue line: Antigen (50 ng); Red line:Antigen (100 ng)



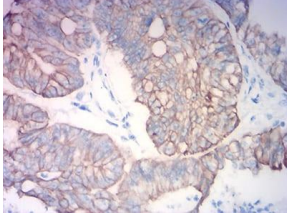
Western blot analysis using KRT19 mAb against human KRT19 (AA: 80-400) recombinant protein. (Expected MW is 62.5 kDa)



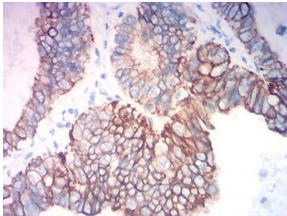
Western blot analysis using KRT19 mAb against HEK293 (1) and KRT19 (AA: 80-400)-hIgGFc transfected HEK293 (2) cell lysate.



Western blot analysis using KRT19 mouse mAb against T47D (1), MCF-7 (2), HepG2 (3), SW620 (4), HT-29 (5), HCT116 (6), PC-12 (7), and C6 (8) cell lysate.



Immunohistochemical analysis of paraffin-embedded colon cancer tissues using KRT19 mouse mAb with DAB staining.



Immunohistochemical analysis of paraffin-embedded endometrial cancer tissues using KRT19 mouse mAb with DAB staining.

Storage

Store at 4°C short term. Aliquot and store at -20°C long term.

501 Changsheng S Rd, Nanhu Dist, Jiaxing, Zhejiang, China

Tel: 86 21 31007137 | E-mail: save@bt-laboratory.com | www.bt-laboratory.com