

## AAT Monoclonal Antibody

### Description

<b>Product type</b>	Antibody
<b>Code</b>	BT-MCA2904
<b>Host</b>	Mouse
<b>Isotype</b>	Mouse IgG1
<b>Size</b>	100µL, 50µL
<b>Immunogen</b>	Purified recombinant fragment of human AAT expressed in E. Coli.
<b>Mol wt</b>	47kDa
<b>Species reactivity</b>	Human,Mouse
<b>Clonality</b>	Monoclonal
<b>Recommended application</b>	WB
<b>Concentration</b>	N/A
<b>Full name</b>	N/A
<b>Synonyms</b>	PI;A1A;AAT;PI1;A1AT;SERPINA1

This product is for research use only, not for use in human, therapeutic or diagnostic procedure.

### Background

AAT, also known as SERPINA1; serpin peptidase inhibitor, clade A (alpha-1 antitrypsin, antitrypsin), member 1. It is secreted and is a serine protease inhibitor whose targets include elastase, plasmin, thrombin, trypsin, chymotrypsin, and plasminogen activator. Severe Serpin A1 deficiency leads to several clinical complications such as pulmonary emphysema, juvenile hepatitis, cirrhosis and hepatocellular carcinoma.

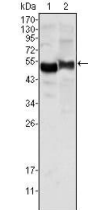
### Recommended Dilution

WB: 1:500 - 1:2000

ELISA: 1:10000

Not yet tested in other applications.

### Images



Western blot analysis using AAT mouse mAb against human plasma (1) and NIH/3T3 cell lysate (2).

### Storage

Store at 4°C short term. Aliquot and store at -20°C long term.