

## CD88 Monoclonal Antibody

### Description

<b>Product type</b>	Antibody
<b>Code</b>	BT-MCA2917
<b>Host</b>	Mouse
<b>Isotype</b>	Mouse IgG2b
<b>Size</b>	100µL, 50µL
<b>Immunogen</b>	Purified recombinant fragment of human CD88 (AA: extra mix) expressed in E. Coli.
<b>Mol wt</b>	39kDa
<b>Species reactivity</b>	Human,Mouse
<b>Clonality</b>	Monoclonal
<b>Recommended application</b>	WB,FCM
<b>Concentration</b>	N/A
<b>Full name</b>	N/A
<b>Synonyms</b>	C5AR1;C5A;C5AR;C5R1

This product is for research use only, not for use in human, therapeutic or diagnostic procedure.

### Background

GeneCards Summary for C5AR1 Gene C5AR1 (Complement C5a Receptor 1) is a Protein Coding gene. Diseases associated with C5AR1 include Mast-Cell Sarcoma and Listeria Meningitis. Among its related pathways are Peptide ligand-binding receptors and Signaling by GPCR. GO annotations related to this gene include G-protein coupled receptor activity and complement component C5a binding. An important paralog of this gene is C5AR2.

### Recommended Dilution

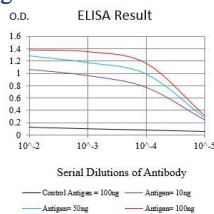
WB: 1:500 - 1:2000

FCM: 1:200 - 1:400

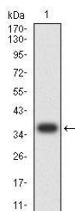
ELISA: 1:10000

Not yet tested in other applications.

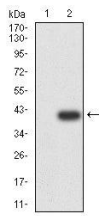
### Images



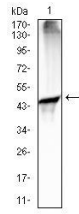
Black line: Control Antigen (100 ng);Purple line: Antigen (10ng); Blue line: Antigen (50 ng); Red line:Antigen (100 ng)



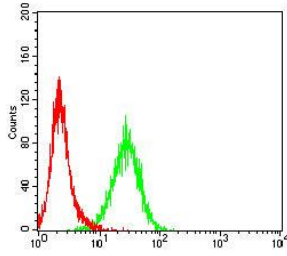
Western blot analysis using CD88 mAb against human CD88 (AA: extra mix) recombinant protein. (Expected MW is 37 kDa)



Western blot analysis using CD88 mAb against HEK293-6e (1) and CD88 (AA: extra mix)-hIgGFc transfected HEK293-6e (2) cell lysate.



Western blot analysis using CD88 mouse mAb against mouse serum (1) tissue lysate.



Flow cytometric analysis of THP-1 cells using CD88 mouse mAb (green) and negative control (red).

### Storage

Store at 4°C short term. Aliquot and store at -20°C long term.

501 Changsheng S Rd, Nanhu Dist, Jiaxing, Zhejiang, China

Tel: 86 21 31007137 | E-mail: [save@bt-laboratory.com](mailto:save@bt-laboratory.com) | [www.bt-laboratory.com](http://www.bt-laboratory.com)