

ADORA2A Monoclonal Antibody

Description

| | |
|--------------------------------|--|
| Product type | Antibody |
| Code | BT-MCA2923 |
| Host | Mouse |
| Isotype | Mouse IgG2a |
| Size | 100µL, 50µL |
| Immunogen | Purified recombinant fragment of human ADORA2A (AA: 274-412) expressed in E. Coli. |
| Mol wt | 44.7kDa |
| Species reactivity | Human |
| Clonality | Monoclonal |
| Recommended application | ICC,FCM |
| Concentration | N/A |
| Full name | N/A |
| Synonyms | A2aR;RDC8;ADORA2 |

This product is for research use only, not for use in human, therapeutic or diagnostic procedure.

Background

N/A

Recommended Dilution

WB: 1:500 - 1:2000

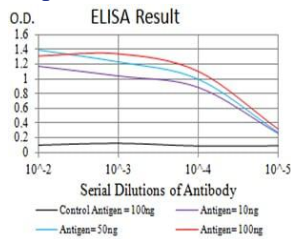
ICC: 1:100 - 1:500

FCM: 1:200 - 1:400

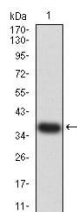
ELISA: 1:10000

Not yet tested in other applications.

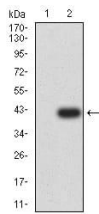
Images



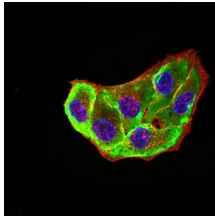
Black line: Control Antigen (100 ng);Purple line: Antigen (10ng); Blue line: Antigen (50 ng); Red line:Antigen (100 ng)



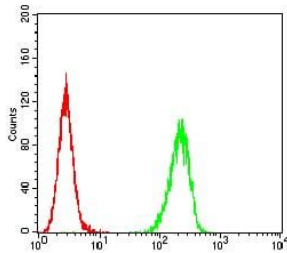
Western blot analysis using ADORA2A mAb against human ADORA2A (AA: 274-412) recombinant protein. (Expected MW is 37 kDa)



Western blot analysis using ADORA2A mAb against HEK293 (1) and ADORA2A (AA: 274-412)-hlgGfC transfected HEK293 (2) cell lysate.



Immunofluorescence analysis of HeLa cells using ADORA2A mouse mAb (green). Blue: DRAQ5 fluorescent DNA dye. Red: Actin filaments have been labeled with Alexa Fluor-555 phalloidin. Secondary antibody from Fisher (Cat#: 35503)



Flow cytometric analysis of HeLa cells using ADORA2A mouse mAb (green) and negative control (red).

Storage

Store at 4°C short term. Aliquot and store at -20°C long term.

501 Changsheng S Rd, Nanhu Dist, Jiaxing, Zhejiang, China

Tel: 86 21 31007137 | E-mail: save@bt-laboratory.com | www.bt-laboratory.com