

PSG1 Monoclonal Antibody

Description

Product type	Antibody
Code	BT-MCA2934
Host	Mouse
Isotype	Mouse IgG1
Size	100µL, 50µL
Immunogen	Purified recombinant fragment of human PSG1 (AA: 250-419) expressed in E. Coli.
Mol wt	47.2kDa
Species reactivity	Human
Clonality	Monoclonal
Recommended application	FCM
Concentration	N/A
Full name	N/A
Synonyms	SP1;B1G1;PBG1;CD66f;PSBG1;PSG95;PSGGA;DHFRP2;PSBG-1;PSGIIA;FL-NCA-1/2;PS-beta-C/D;PS-beta-G-1

This product is for research use only, not for use in human, therapeutic or diagnostic procedure.

Background

The human placenta is a multihormonal endocrine organ that produces hormones, enzymes, and other molecules that support fetal survival and development. Pregnancy-specific beta-1-glycoprotein (PSBG, PSG) is a major product of the syncytiotrophoblast, reaching concentrations of 100 to 290 mg/l at term in the serum of pregnant women (Horne et al., 1976 [PubMed 971765]). PSG is a member of the immunoglobulin (Ig) superfamily (Watanabe and Chou, 1988 [PubMed 3257488]; Streydio et al., 1988

Recommended Dilution

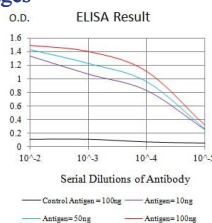
WB: 1:500 - 1:2000

FCM: 1:200 - 1:400

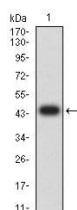
ELISA: 1:10000

Not yet tested in other applications.

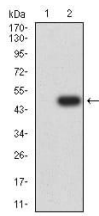
Images



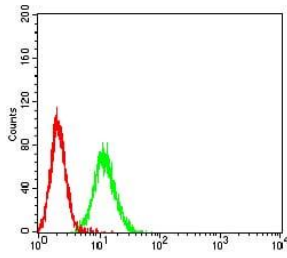
Black line: Control Antigen (100 ng);Purple line: Antigen (10ng); Blue line: Antigen (50 ng); Red line:Antigen (100 ng)



Western blot analysis using PSG1 mAb against human PSG1 (AA: 250-419) recombinant protein. (Expected MW is 45.4 kDa)



Western blot analysis using PSG1 mAb against HEK293 (1) and PSG1 (AA: 250-419)-hIgGFc transfected HEK293 (2) cell lysate.



Flow cytometric analysis of K562 cells using PSG1 mouse mAb (green) and negative control (red).

Storage

Store at 4°C short term. Aliquot and store at -20°C long term.

501 Changsheng S Rd, Nanhu Dist, Jiaxing, Zhejiang, China

Tel: 86 21 31007137 | E-mail: save@bt-laboratory.com | www.bt-laboratory.com