

## LRP12 Monoclonal Antibody

### Description

|                                |  |
|--------------------------------|--|
| <b>Product type</b>            | Antibody   |
| <b>Code</b>                    | BT-MCA2954   |
| <b>Host</b>                    | Mouse  |
| <b>Isotype</b>                 | Mouse IgG1   |
| <b>Size</b>                    | 100µL, 50µL  |
| <b>Immunogen</b>               | Purified recombinant fragment of human LRP12 (AA: extra 355-492) expressed in E. Coli. |
| <b>Mol wt</b>                  | 95kDa  |
| <b>Species reactivity</b>      | Human  |
| <b>Clonality</b>               | Monoclonal   |
| <b>Recommended application</b> | Others   |
| <b>Concentration</b>           | N/A  |
| <b>Full name</b>               | N/A  |
| <b>Synonyms</b>                | ST7  |

This product is for research use only, not for use in human, therapeutic or diagnostic procedure.

### Background

This gene encodes a member of the low-density lipoprotein receptor related protein family. The product of this gene is a transmembrane protein that is differentially expressed in many cancer cells. Alternate splicing results in multiple transcript variants.

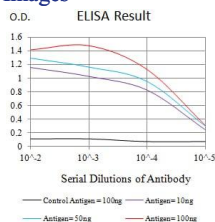
### Recommended Dilution

WB: 1:500 - 1:2000

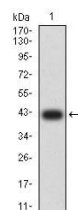
ELISA: 1:10000

Not yet tested in other applications.

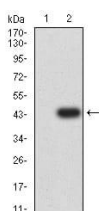
### Images



Black line: Control Antigen (100 ng); Purple line: Antigen (10ng); Blue line: Antigen (50 ng); Red line: Antigen (100 ng)



Western blot analysis using LRP12 mAb against human LRP12 (AA: extra 355-492) recombinant protein. (Expected MW is 41.6 kDa)



Western blot analysis using LRP12 mAb against HEK293 (1) and LRP12 (AA: extra 355-492)-hlgGfc transfected HEK293 (2) cell lysate.

## Storage

Store at 4°C short term. Aliquot and store at -20°C long term.

501 Changsheng S Rd, Nanhu Dist, Jiaxing, Zhejiang, China

Tel: 86 21 31007137 | E-mail: [save@bt-laboratory.com](mailto:save@bt-laboratory.com) | [www.bt-laboratory.com](http://www.bt-laboratory.com)