

PRL Monoclonal Antibody

Description

Product type	Antibody
Code	BT-MCA2956
Host	Mouse
Isotype	Mouse IgG2b
Size	100 μ L, 50 μ L
Immunogen	Purified recombinant fragment of human PRL (AA: 65-173) expressed in E. Coli.
Mol wt	26kDa
Species reactivity	Human
Clonality	Monoclonal
Recommended application	IHC,ICC,FCM
Concentration	N/A
Full name	N/A
Synonyms	N/A

This product is for research use only, not for use in human, therapeutic or diagnostic procedure.

Background

This gene encodes the anterior pituitary hormone prolactin. This secreted hormone is a growth regulator for many tissues, including cells of the immune system. It may also play a role in cell survival by suppressing apoptosis, and it is essential for lactation. Alternative splicing results in multiple transcript variants that encode the same protein.

Recommended Dilution

WB: 1:500 - 1:2000

IHC-p: 1:200 - 1:1000

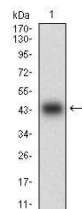
ICC: 1:200 - 1:1000

FCM: 1:200 - 1:400

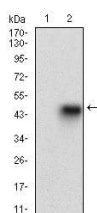
ELISA: 1:10000

Not yet tested in other applications.

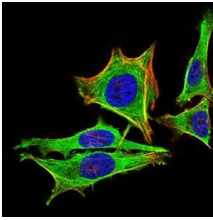
Images



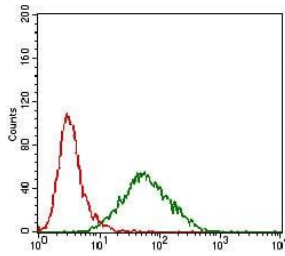
Western blot analysis using PRL mAb against human PRL (AA: 65-173) recombinant protein.
(Expected MW is 38.5 kDa)



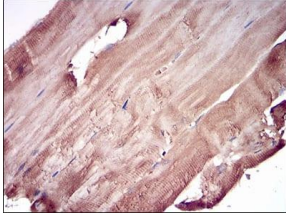
Western blot analysis using PRL mAb against HEK293 (1) and PRL (AA: 65-173)-hIgGFc transfected HEK293 (2) cell lysate.



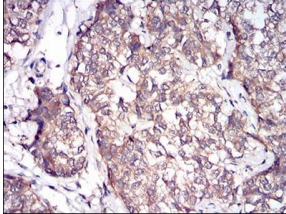
Immunofluorescence analysis of HeLa cells using PRL mouse mAb (green). Blue: DRAQ5 fluorescent DNA dye. Red: Actin filaments have been labeled with Alexa Fluor-555 phalloidin. Secondary antibody from Fisher (Cat#: 35503)



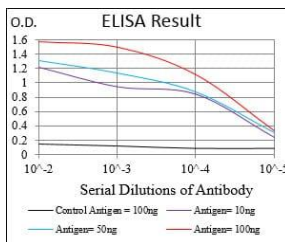
Flow cytometric analysis of HeLa cells using PRL mouse mAb (green) and negative control (red).



Immunohistochemical analysis of paraffin-embedded muscle tissues using PRL mouse mAb with DAB staining.



Immunohistochemical analysis of paraffin-embedded bladder cancer tissues using PRL mouse mAb with DAB staining.



Black line: Control Antigen (100 ng); Purple line: Antigen(10ng); Blue line: Antigen (50 ng); Red line: Antigen (100 ng);

Storage

Store at 4°C short term. Aliquot and store at -20°C long term.

501 Changsheng S Rd, Nanhu Dist, Jiaxing, Zhejiang, China

Tel: 86 21 31007137 | E-mail: save@bt-laboratory.com | www.bt-laboratory.com