

LILRA6 Monoclonal Antibody

Description

Product type	Antibody
Code	BT-MCA2959
Host	Mouse
Isotype	Mouse IgG1
Size	100µL, 50µL
Immunogen	Purified recombinant fragment of human LILRA6 (AA: 52-195) expressed in E. Coli.
Mol wt	52.4kDa
Species reactivity	Others
Clonality	Monoclonal
Recommended application	FCM
Concentration	N/A
Full name	N/A
Synonyms	ILT5;ILT8;CD85b;ILT-8;LILRB3;LILRB6

This product is for research use only, not for use in human, therapeutic or diagnostic procedure.

Background

The protein encoded by this gene may act as receptor for class I MHC antigens.

Recommended Dilution

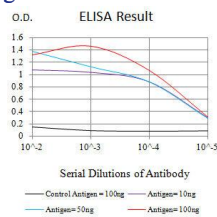
WB: 1:500 - 1:2000

FCM: 1:200-1:400

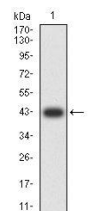
ELISA: 1:10000

Not yet tested in other applications.

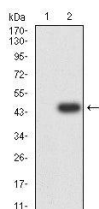
Images



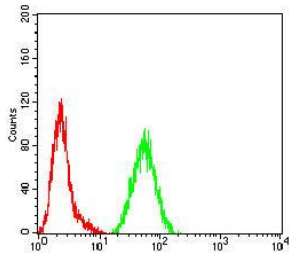
Black line: Control Antigen (100 ng);Purple line: Antigen (10ng); Blue line: Antigen (50 ng); Red line: Antigen (100 ng)



Western blot analysis using LILRA6 mAb against human LILRA6 (AA: 52-195) recombinant protein. (Expected MW is 42.1 kDa)



Western blot analysis using LILRA6 mAb against HEK293 (1) and LILRA6 (AA: 52-195)-hIgGfc transfected HEK293 (2) cell lysate.



Flow cytometric analysis of HeLa cells using LILRA6 mouse mAb (green) and negative control (red).

Storage

Store at 4°C short term. Aliquot and store at -20°C long term.

501 Changsheng S Rd, Nanhu Dist, Jiaxing, Zhejiang, China

Tel: 86 21 31007137 | E-mail: save@bt-laboratory.com | www.bt-laboratory.com