

## HIST2H3C(27Ac) Monoclonal Antibody

### Description

<b>Product type</b>	Antibody
<b>Code</b>	BT-MCA2972
<b>Host</b>	Mouse
<b>Isotype</b>	Mouse IgG1
<b>Size</b>	100µL, 50µL
<b>Immunogen</b>	Synthesized peptide of human HIST2H3C (AA: ATKAARK(Ac)SAPATGGV) .
<b>Mol wt</b>	15.4kDa
<b>Species reactivity</b>	Human
<b>Clonality</b>	Monoclonal
<b>Recommended application</b>	IHC,FCM
<b>Concentration</b>	N/A
<b>Full name</b>	N/A
<b>Synonyms</b>	H3;H3.2;H3/M;H3F2;H3FM;H3FN

This product is for research use only, not for use in human, therapeutic or diagnostic procedure.

### Background

N/A

### Recommended Dilution

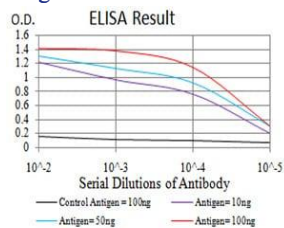
IHC-p: 1:200 - 1:1000

FCM: 1:200 - 1:400

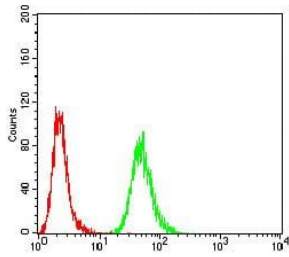
ELISA: 1:10000

Not yet tested in other applications.

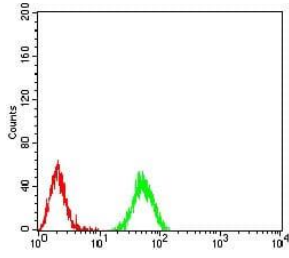
### Images



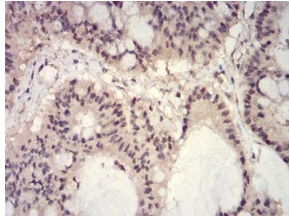
Black line: Control Antigen (100 ng); Purple line: Antigen(10ng); Blue line: Antigen (50 ng); Red line: Antigen (100 ng);



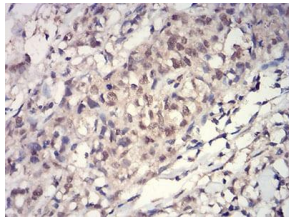
Flow cytometric analysis of HeLa cells using HIST2H3C(27Ac) mouse mAb (green) and negative control (red).



Flow cytometric analysis of HeLa cells using HIST2H3C(27Ac) mouse mAb (green) and negative control (red).



Immunohistochemical analysis of paraffin-embedded colon cancer tissues using HIST2H3C(27Ac) mouse mAb with DAB staining.



Immunohistochemical analysis of paraffin-embedded breast cancer tissues using HIST2H3C(27Ac) mouse mAb with DAB staining.

### Storage

Store at 4°C short term. Aliquot and store at -20°C long term.

501 Changsheng S Rd, Nanhui Dist, Jiaxing, Zhejiang, China

Tel: 86 21 31007137 | E-mail: [save@bt-laboratory.com](mailto:save@bt-laboratory.com) | [www.bt-laboratory.com](http://www.bt-laboratory.com)